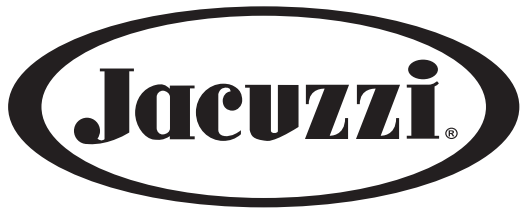




HOT TUB COLLECTION AND SWIM SPA

2020



HOT TUB COLLECTION AND SWIM SPA

2020



CONTENTS

Brand story	4
Jacuzzi®	12
Hydromassage	14
Clean water	20
Innovation	22
Collections	24
J-500™	26
J-400™	32
J-300™	44
J-200™	56
Design	68
Professional	82
Lodge	94
Swim Spa	100
Colours & finishes	110
Service & aftercare	114

THE BEST MOMENT OF THE DAY

Maybe you've spent hours in a successful meeting,
Or played a gruelling five-a-side football match with your friends.

Perhaps you've been on your feet all day shopping,
Or out travelling to explore wonderful new locations.

All these things require effort.
They are the exciting yet small adventures of everyday life.

The ones that give you real pleasure, purpose and a
feeling of fulfilment.

As great as they are they can also be tiring.
Now is the time to turn an exceptional or a tiring day
into a perfect one.

The moment that refreshes you to face new challenges tomorrow.
It's Jacuzzi® time.

It's not just a matter of hydromassage technology,
we're talking about real science that produces
authentic, all-round well-being.

It's the best moment of the day.

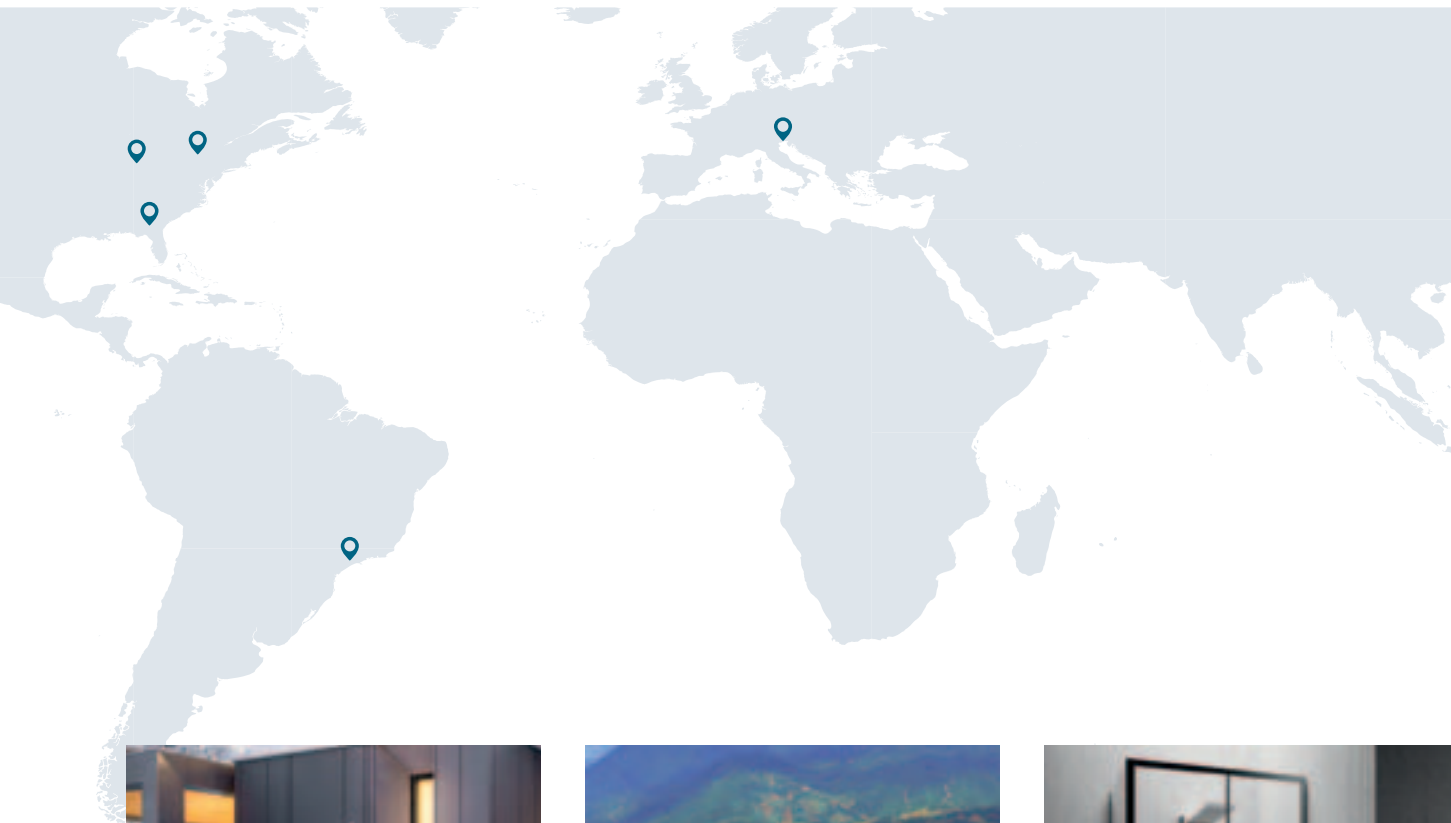


JACUZZI® BRAND IS AN ICON

Renowned for its performance reliability and ease of use,
we set the standard by which all hot tubs are measured.

While imitation may be the sincerest form of flattery, only
60 years of innovation can produce hot tub designs made to
the demanding standards of the Jacuzzi® Brand.





Hot Tubs



Swim Spas



Showers



Bathtubs



Saunas



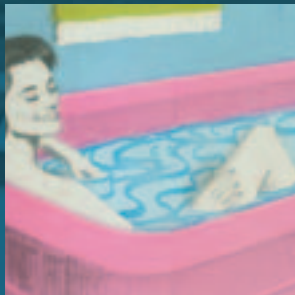
Commercial

Jacuzzi® Brand products are manufactured in 5 countries, enjoyed in more than 100 countries worldwide, and employ thousands of people around the world. Representing decades of innovation, design, performance and ease of use, the Jacuzzi® Brand is trusted by millions of customers globally.

BRAND STORY

When the seven Jacuzzi brothers immigrated from Italy to the United States, they had no idea that a pump they designed for orchards would revolutionise hydrotherapy in the home. And while the family's critical need to change the life of a child triggered this therapeutic invention, a desire for wellness pioneered an industry.

Jacuzzi® create and market the world's first integrated whirlpool bath, the 'Roman'.



New features that can be used indoors and outdoors are introduced such as waterfalls.



1956



First hydromassage prototype is created.

1960



1970



First self-contained family-size spa is created.

1980



1990



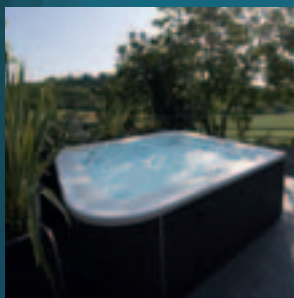
First outdoor spa range.



The experience of total immersion and top performance for a family spa.



Jacuzzi® presents Virtus™



New collection J-300™



2000

2010

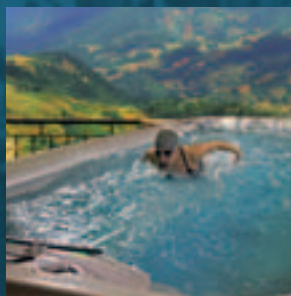
2018

2019

2020



Jacuzzi® is now one of the leading brands in hydromassage innovation.



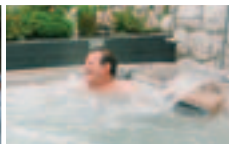
Jacuzzi® Swim Spa

PERFORMANCE

Jacuzzi® premium products support the needs of high endurance athletes and teams who are committed to maintaining and improving their quality of life, both during and beyond their active careers through the power of hydrotherapy. Whether you're a professional athlete or a weekend warrior, Jacuzzi® products increase your ability to recover, relax and perform, harnessing water's natural ability to heal the mind, body and soul. The Jacuzzi® Brand proudly partners with endurance athletes and professional teams around the world.



JANET EVANS
Olympian and World Cup
Champion Freestyle Swimmer



MIKE ERUZIONE
Captain of the Gold Medal-Winning
1980 Winter Olympic Hockey Team



AMY PURDY
Paralympic Snowboarder



TRACE WORTHINGTON
2X Olympian and U.S. Ski and
Snowboard Hall of Famer



MELISSA STOCKWELL
Paralympian and Former U.S. Army
Officer



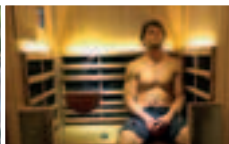
JOEY MANTIA
Olympian and World Champion
Speed Skater



SALLY GUNNELL
Olympic Track Champion



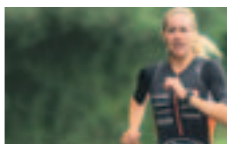
THURL BAILEY
Retired NBA Player and
Inspirational Speaker



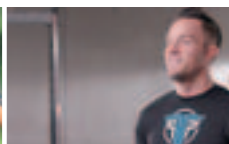
STEVE NYMAN
Olympian and World Cup Ski Racer



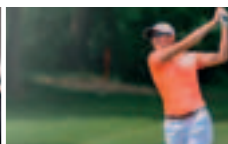
TIM JITLOFF
2X Olympian and U.S. Ski Team
Member



KIMBERLEY MORRISON
Triathlete and Ironman Champion



JASON LINDSAY
Professional Trainer



CYDNEY CLANTON
LPGA Pro



TRAIN LIKE A PRO

WITH A

JACUZZI® HOT TUB

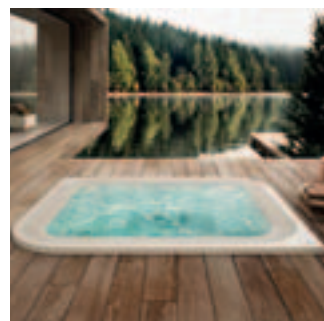
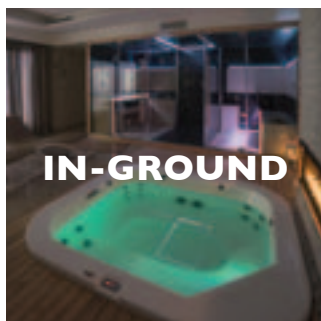
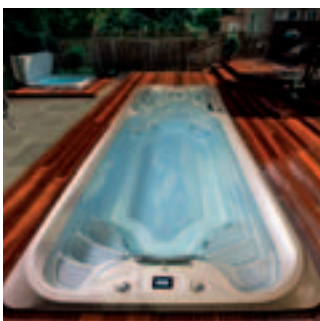
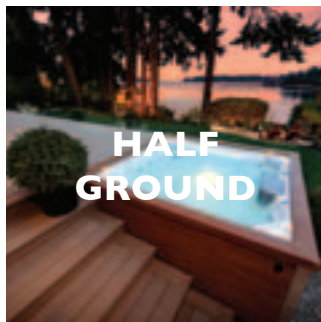
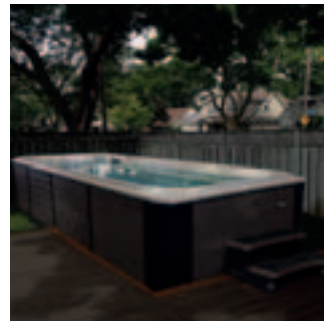
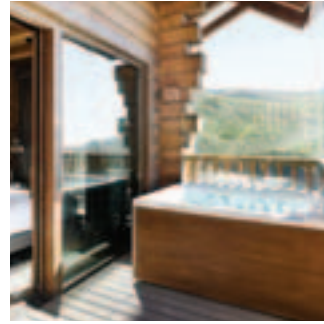
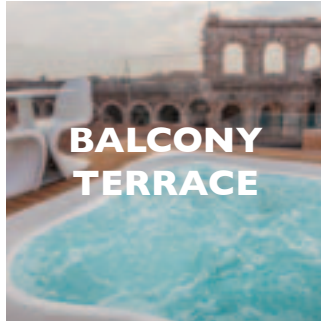
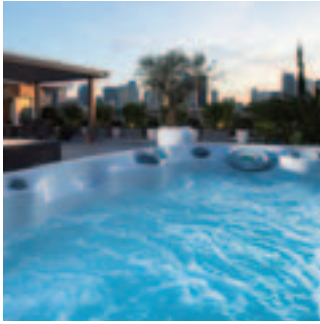


#JacuzziPerformance

A photograph of a white Jacuzzi hot tub on a wooden deck. The background shows trees and a house. The image has a blue tint. The text is overlaid on the image.

THERE'S A JACUZZI® HOT TUB FOR EVERY KIND OF SPACE.

Whether your outdoor or indoor space is generous, compact or somewhere in between, there's a Jacuzzi® hot tub to fit. From a lawn fringed patio to a roof top terrace, you can be sure that our ingeniously designed and easy to install range will be right at home. With no need for outdoor plumbing, your hot tub can be conveniently installed into an area that best suits the way you live.



HYDROMASSAGE

Hydromassage research supports the benefits of hydrotherapy for stress, lower back pain, sleeplessness, post exercise recovery, leg cramps, arthritis and fibromyalgia.

FX-S

FX

FX-R

NX2

FX-LR

MX2

BX

FX-L

RX

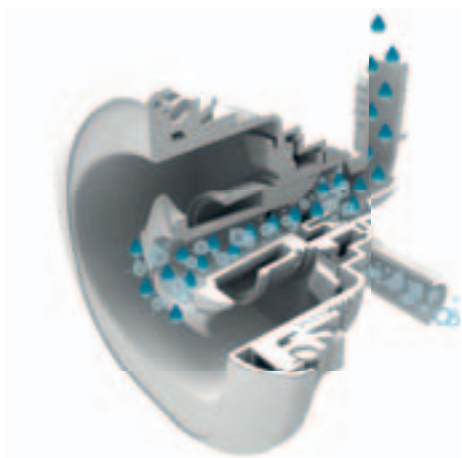
PX

FX-D

J-500™, J-400™, AND J-300™

J-300™
EXCLUSIVEJ-400™
J-300™J-500™
J-400™J-500™
J-400™J-500™
EXCLUSIVE

POWERPRO® JETS COLLECTION KEY



EXCLUSIVE POWERPRO® JET SYSTEM

Utilising Jacuzzi® Aqualibrium®, the combination of versatile PowerPro® Jets, and our ergonomically designed seats, our products deliver an adjustable high-flow, low-pressure hydromassage that feels like no other.

AQUALIBRIUM®

The perfect mix of air and water.



THE FX therapy seat

The full coverage neck and back seat not only delivers deep, adjustable pressure to relieve chronic aches and pains. The FX-12 seat also targets muscle tension in your calves and feet for a full-body experience.



THE RX therapy seat

The RX rotating nozzle in the therapeutic seat offers back and neck support for the perfect hydro-massage.



THE MX therapy seat

Recognised as our original Jacuzzi® Jet, the MX Jet seat delivers a concentrated massage especially effective for larger muscles in the lower back.



THE PROAIR™ LOUNGE

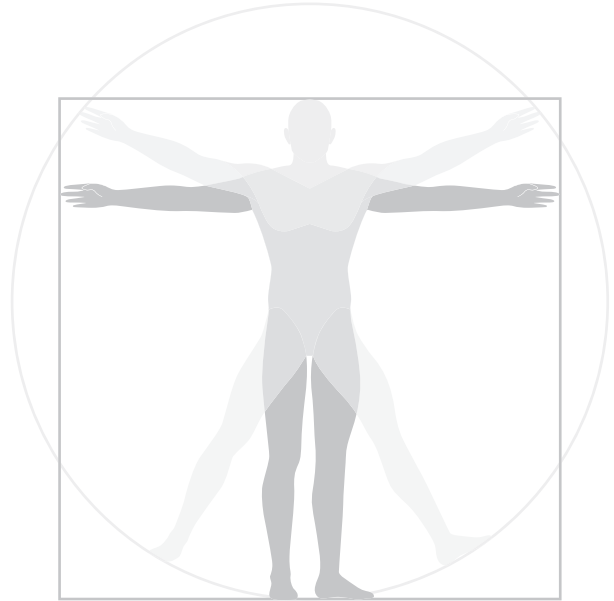
The perfect combination of two types of PowerPro® Jets, this muscle knot release lounge seat stimulates surrounding tissue. The upper back rotating massage of the FX Rotational Jets eases the tension of the muscles along your neck and shoulders while the rifling action targets the smaller muscle groups of your legs and lower back.

Some of the smallest daily rituals that you enjoy, can be more beneficial than you realize. Following a regular hydromassage routine, can improve your overall well-being by reducing stress and lower back pain, improving sleep and post exercise recovery, and alleviating restless leg syndrome, cramps, arthritis and fibromyalgia. And it's just as easy to build into your daily routine, as taking time out to enjoy a cup of coffee!

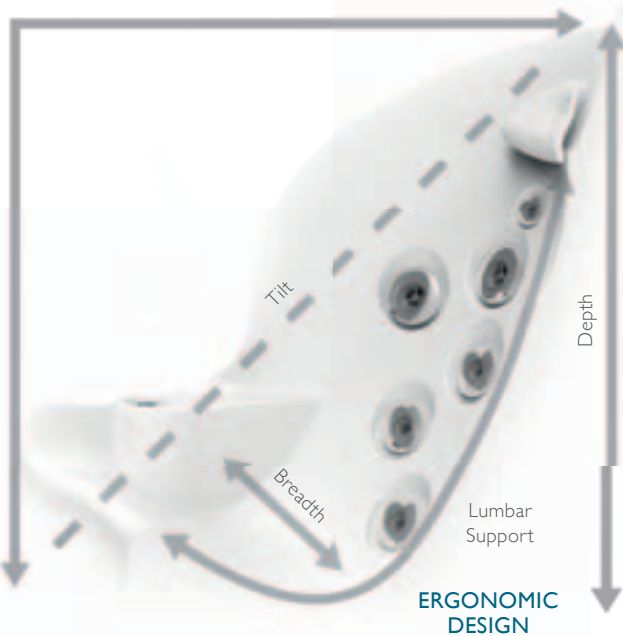


ANTHROPOMETRIC DIMENSIONS

By studying the anthropometric dimensions of the 5th percentile of females and 95th percentile of males, we can design hot tubs based on the average dimensions of 90% of the population to deliver a personalized massage.



MUSCLE STRUCTURE
JET CONFIGURATION

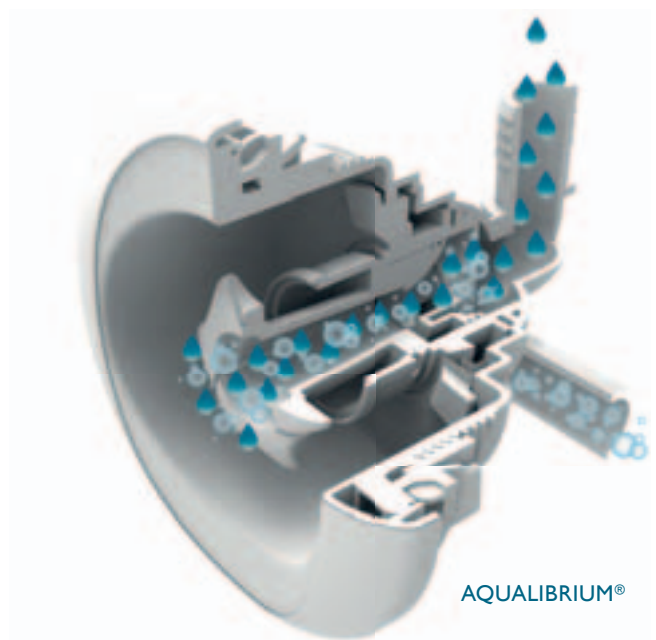


ERGONOMIC SEATING

Seats designed to follow the contours of the body and recessed jets placed to perfectly match the muscle structure of the human form deliver a comfortable, premium hydromassage experience for most body types.

COMPLETE BALANCE

Using the Aqualibrium® Formula, each jet is individually calibrated to deliver the perfect balance of air and water, then precisely paired with the exact pump-to-jet ratio needed to ensure a balanced experience in each and every seat.



POWERPRO® JETS*



POWERPRO® JETS COLLECTION KEY

BODY COVERAGE:	
Cervical (Neck)	NX2
Dorsal (Back)	FX-R, FX, MX2, RX
Lumbar (Back)	FX-LR, MX2, FX-L
Hips	FX-D
Palms/Wrists	PX
Legs	FX, FX-R, PX, BX
Feet	MX2, FX-S, FX-LR, FX-R



FX-S PowerPro® FX Small
Based on FX technology, the FX Smalllets are perfect for a focused massage on key pressure points such as your feet.



FX PowerPro® FX
The unique rifling action creates a rejuvenating, spiral stream of air and water, perfect for stimulating muscle groups.



FX-R PowerPro® FX Rotational
Focusing on smaller muscle groups with a kneading effect, the FX Rotational Jet stimulates surrounding tissue.



NX2 PowerPro® NX2
This directional jet effectively relieves tension and strain in the sensitive and hard-to reach neck area through a highly focused stream of water.

More jets do not necessarily equal a better hydromassage, but the right jets do. From the perfect mix of air and water to the careful placement of each exclusive POWERPRO® jet, we deliver the optimal massage. And that is why the Jacuzzi® brand is recognised by consumers as the industry leader.



FX-LR PowerPro® FX
Large Rotational

With a wide swath that provides an exceptional massage for large muscles, the rotational action can help overworked, overstressed muscles and joints.



MX2 PowerPro®
MX2

Based on the form and function of the original Jacuzzi® Jet, the new generation jets deliver maximum volume at a higher air-to-water ratio to deliver a bold massage to the muscles in the lower back.



RX PowerPro®
RX

The spinning RX Jet delivers comforting relief to the back and shoulders utilizing the highest performance hydromassage the Jacuzzi® Brand offers.



FX-D PowerPro®
FX Directional

Designed to relieve tension and improve circulation, this spiral action directional jet delivers a bold, targeted massage to the hips.



BX PowerPro®
BX

Exclusive to the J-300™ collection, the comforting yet rejuvenating bubbling effect massages the calves.



FX-L PowerPro®
FX Large

Focusing on the middle of the back to relieve tension and muscle strain, the spiral action massage promotes better circulation.



PX PowerPro®
PX

Perfect for small muscle groups in the wrists, hands and legs, the gentle pulsating massage can be adjusted for different rates of flow.

* PowerPro® Jets are available in select models in the J-500™, J-400™ and J-300™ collections. Also available in Design collection (except Alimia) and Professional ranges (except Lodge). Sizes shown are approximate.

CLEAN WATER

There are two options for clean water: a salt system generates chlorine from salt; UV-C technology gives you the choice between chlorine or bromine. We put the choice in your hands with UV-C technology.

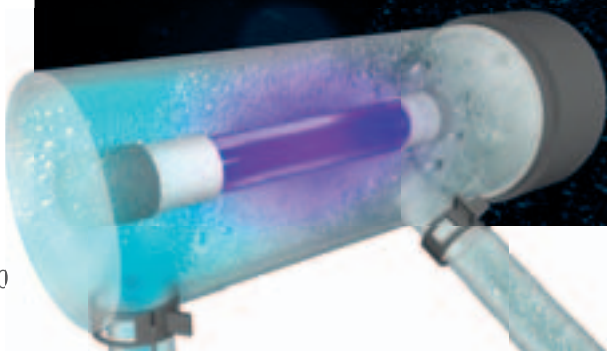
CLEARRAY® UV-C TECHNOLOGY

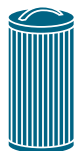


Designed to work with UV **CLEARRAY**®, technology, automatically oxidizing impurities in the water. Low-output ozone has minimal off-gassing and prolongs life of equipment longer than traditional ozone systems.

The UV **CLEARRAY**® Water management system offers clean and clear water. Using UV-C technology to neutralise waterborne pathogens and reduce the amount of sanitizer you use, maintaining clean, fresh, clear water has never been easier.

UV **CLEARRAY**® comes standard on all models and requires a simple annual bulb change.





5-STAGE FILTRATION PROCESS*

STAGES 1&2

The surface skimming weir and ProCatch™ bag work together to clean the surface while trapping large debris for easy removal.

STAGE 3

The ProClarity® circulation pump filter helps to ensure clean, sparkling water quickly by catching tiny debris and particles that other filters miss.

STAGE 4

The ProClear® filter circulation pump works to clarify water even when the jets are not running.

STAGE 5

The ProClear® jet pump filter operates with your hot tub's hydromassage pump to remove large and small particles providing the cleanest water.

All models in every collection utilize CLEARRAY® technology and multi-stage filtration:



CLEARRAY® UV-C TECHNOLOGY

Using UV-C light to neutralize 99.9% of waterborne pathogens, maintaining clean, fresh, clear water has never been easier. CLEARRAY® UV-C technology comes standard on all models and requires a simple annual bulb change.



CLEARRAY® PRO₃TECT™ LOW OUTPUT AUTOMATIC OXIDIZER (OPTIONAL)

Part of the CLEARRAY® Water Management System, CLEARRAY® PRO₃TECT™ supports a hands-free approach to water care for clean, clear water.

- Designed to work with CLEARRAY® UV-C technology, automatically oxidizing impurities in the water
- Low-output ozone has minimal off-gassing and prolongs life of equipment longer than traditional ozone systems
- This genuine Jacuzzi® part is specifically calibrated to work with the filtration system in your hot tub
- Upgrade any new J-300™, J-400™, or J-500™ Collection hot tub to include a factory-installed CLEARRAY® PRO₃TECT™ system

* Stages of filtration vary by collection.

INNOVATION

From an app on your smart device, you can enjoy the next generation of spa ownership. The exclusive SmartTub™ system is engineered to maximize your relaxation, recovery, and energysaving potential. It's easier than ever to use and maintain your Jacuzzi® Hot Tub.



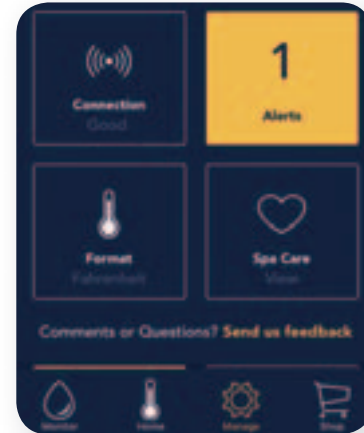
Alexa,
ask my
hot tub
to start
my massage

SIMPLIFIED HOT TUB OWNERSHIP AT YOUR FINGERTIPS



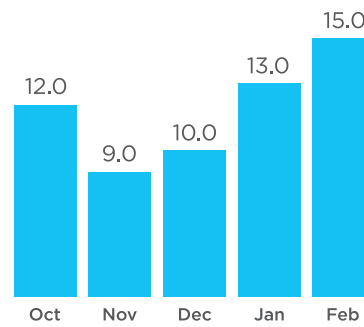
CUSTOMIZE YOUR SETTINGS

- Control energy savings and filtration
- Change temperature, lighting, and jets
- Manage your vacation home hot tub



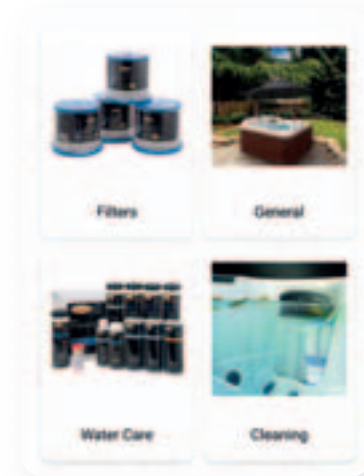
REMOTE MONITORING

- Sends real-time alerts and diagnostics to the dealer
- Delivers energy usage reports
- Relays power outage notifications



EASY TO USE

- Always connected with cellular based service
- Activate hot tub with your Smart Home device
- Access personalized tips and how-to videos
- Shop accessories and water care supplies



SmartTub™ system uses cellular-based communication and requires cell service from our provider partner in your area. See website for details. Requires subscription beginning in second year of ownership.

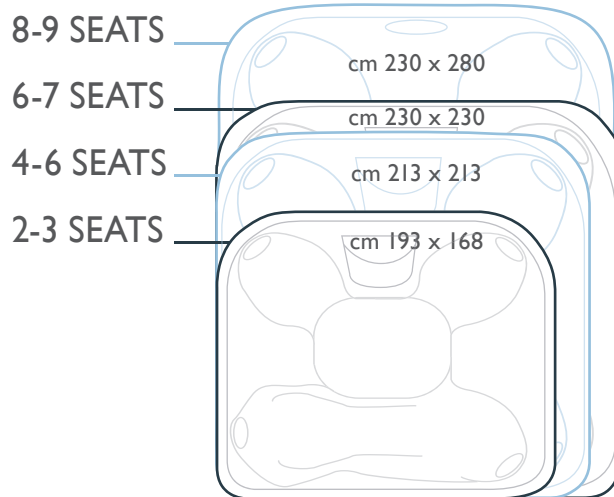
Estimates are based on sensor readings and are not meant to match your utility measurements, see your local utility company for specifics to your local system.

MODEL SELECTION

I. SELECT SIZE AND MASSAGE OPTIONS

A common misconception about hot tub size is that you're limited to models with less seating options when yard space is limited.

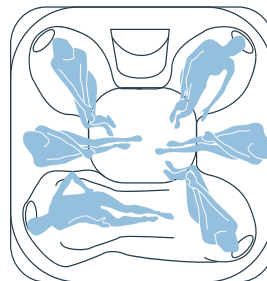
The good news is that a hot tub with more massage combinations requires only a slightly larger footprint; sometimes a matter of only a few inches.



2. CHOOSE LOUNGE VS. OPEN SEATING

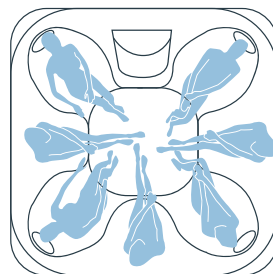
LOUNGE

A lounge seat offers a full-body massage option and a more secluded spa experience.



OPEN SEATING

An open seating model offers more massage options and makes communicating with others in the hot tub easier.



3. FIND THE COLLECTION THAT'S RIGHT FOR YOU

J-500™
COLLECTION

J-400™
COLLECTION

J-300™
COLLECTION

J-200™
COLLECTION

DESIGN
COLLECTION

PROFESSIONAL
COLLECTION

LODGE S, M, L
COLLECTION

SWIM SPA
COLLECTION



J-500™

LUXURY
COLLECTION





J-500™

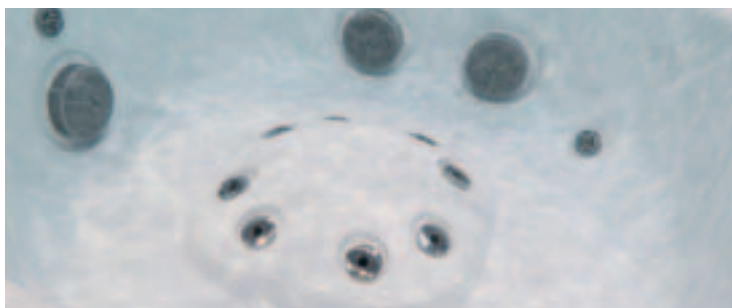
LUXURY COLLECTION

FEATURES:

- SmartTub™ System
- Dual Elevated Edges with Multi-Color Waterfalls
- PowerPro® Jets, Specialty PowerPro® FX-D Jet
- Dual Multi-Color Waterfalls
- ProTouch™ Glass Control
- ProEdge™ Interior Illumination
- Integrated Corner Exterior Lighting
- CLEARRAY® PRO3TECT™ Low Output Ozone Generator
- CLEARRAY® On-Demand
- 5-Stage Filtration System
- ProStream™ Filter Pump
- Propolymer™ Foundation
- Quick Drain System
- Sleek Cushioned Headrest
- BLUEWAVE® Stereo, Premium Speakers, Amplified Sub-Woofer
- Curvalux™ Designer Woven Exterior
- ProLast™ Cover

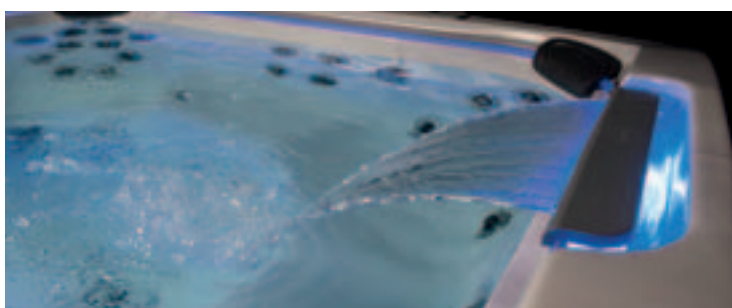
OPTIONAL FEATURES:

- ProLast™ Extreme Outdoor Hot Tub Cover



IN J-585™ REFLEXOLOGY FOOT DOME

- The J-500™ reflexology experience comes in a variety of forms from a full (J-585™) to multiple half (J-575™) foot dome modules that provide an advanced foot massage.
- Positioned centrally in the footwell so that multiple users can benefit from this hydrotherapy massage feature no matter where you are sitting in the hot tub.
- This massage capability is ideal to help you unwind after a long day at work, a heavy workout or prolonged time on your feet.



IN J-585™ AND J-575™ WATERCOLOUR™ WATERFALLS

- Dual facing waterfalls, combined with ProEdge™ Interior Lighting provide a 360° fibreoptic experience which creates a complete environment of relaxation that can be tailored to your mood.
- The waterfalls create a relaxing head and neck massage to help unwind after a long day and work in harmony to provide an exceptional massage for the larger back muscles.



IN J-575™ RX THERAPY FULL BODY LOUNGER

- The J-575™ lounger is a fully immersive experience with focused and deep tissue massage jets for your back and hips to softer less vigorous jet options for the back of your legs and feet.
- The lounger has been upgraded and debuts two large FX Directional jets that create a kneading effect, which stimulates the muscle tissue in the hips for a superior massage experience.
- The J-575™ hydrotherapy seat incorporates comfortable arms rests which also include advanced PX therapy jets for a pulsating wrist massage.

All hot tub dimensions are shown in: L x W x H.



POWERPRO® JETS COLLECTION KEY



J-585™

6-7 Seats

DIMENSIONS*
231 cm x 231 cm x 92/107 H cm

DRY WEIGHT
407 kg.

TOTAL FILLED WEIGHT
2.457 kg.

AVERAGE SPA VOLUME
1.666 l

ELECTRICAL
230-240 VAC 50Hz 30A

TOTAL JETS BY TYPE:



J-575™



5-6 Seats

DIMENSIONS*
231 cm x 231 cm x 92/107 H cm

DRY WEIGHT
407 kg.

TOTAL FILLED WEIGHT
2.470 kg.

AVERAGE SPA VOLUME
1.685 l

ELECTRICAL
230-240 VAC 50Hz 30A

TOTAL JETS BY TYPE:



ACRYLIC OPTIONS



SKIRT (FINISHING) CURVALUX™



Roasted Chestnut Silverwood

PROLAST™ COVERS



Gray Sienna Black (optional)



J-585™



SmartTub™

The masterpiece in the collection has the most advanced technology within its visionary beauty.



92/107 cm

231 cm



231 cm



REVERSIBLE CONTROLS



CLEARRAY® PRO3TECT™



DOUBLE WATERFALL



MULTICOLOR



STEREO SYSTEM

TOTAL POWERPRO® JETS:	46
DRY WEIGHT:	407 kg
TOTAL FILLED WEIGHT:	2.457 kg
ELECTRICAL REQUIREMENTS:	230-240 VAC 50Hz 30A
COLOURS AND FINISHINGS:	page 110 - 111



J-575™



SmartTub™

Never just a hot tub, this is an iconic centrepiece with style and excellence woven in.



92/107 cm

231 cm



231 cm



REVERSIBLE CONTROLS



CLEARRAY® PRO3TECT™



DOUBLE WATERFALL



MULTICOLOR



STEREO SYSTEM

TOTAL POWERPRO® JETS:	49
DRY WEIGHT:	407 kg
TOTAL FILLED WEIGHT:	2.470 kg
ELECTRICAL REQUIREMENTS:	230-240 VAC 50Hz 30A
COLOURS AND FINISHINGS:	page 110 - 111



J-400™

DESIGNER
COLLECTION





J-400™

DESIGNER COLLECTION

FEATURES:

- SmartTub™ System
- Distinct High Back Design
- PowerPro® Jets, Specialty PowerPro® RX and PX Jets
- Watercolour™ Waterfall
- ProTouch™ Control
- Premium Led Lighting
- Exterior Lights
- Illuminated Deviators and Cup Holders
- CLEARRAY® PRO3TECT™ Low Output Ozone Generator
- CLEARRAY® On-Demand
- 5-Stage Filtration System
- ProStream™ Filter Pump
- Propolymer™ Foundation
- Quick Drain System
- Tool-Free Cabinet Removal
- Adjustable Headrest
- Status Indicator Light
- SmartSeal® Insulation
- ProFinish™ Cabinetry
- ProLast™ covers

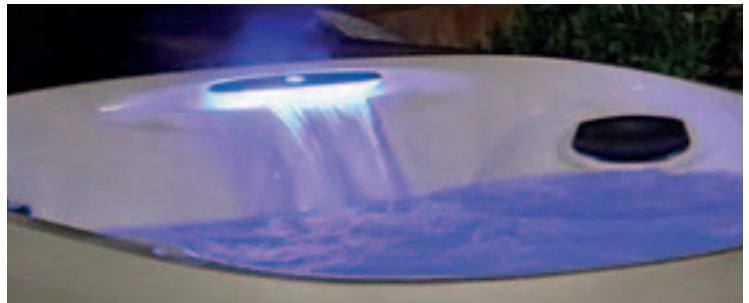
OPTIONAL FEATURES:

- BLUEWAVE® Stereo, Premium Speakers, Amplified Sub-Woofer
- ProLast™ Extreme Outdoor Hot Tub Cover



IN J-495™, J-485™ AND J-475™ FOOT DOME

- Advanced IX jets combined with chromotherapy lighting produces effervescent bubbles to give the best reflexology experience.
- Positioned centrally in the footwell so that multiple users can benefit from this hydrotherapy massage feature no matter where you are sitting in the hot tub.
- This massage capability is ideal to help you unwind after a long day at work, a heavy workout or prolonged time on your feet.



J-495™, J-485™, J-475™, J-445™ AND J-435™ EXTRA LARGE WATERCOLOUR™ WATERFALL

- Extra large double waterfalls which act as a soothing water feature and as a relaxing head and neck massage to help unwind after a long day.
- This combined with large rotational jets for a focused back massage designed to release and soothe aches and pains.
- The chromotherapy lighting controlled via the ProTouch™ control panel allows you to set the scene and create an ambiance tailored to your needs or occasion.



J-475™ AND J-435™ FULL BODY MASSAGE LOUNGER

- The J-400™ lounger is a fully immersive experience with focused and deep tissue massage jets for your back and hips to delicate and sensual blowers for the back of your legs and feet.
- Create that feeling of lying in bed in total relaxation in this custom hydromassage setting.

All hot tub dimensions are shown in: L x W x H



POWERPRO® JETS COLLECTION KEY



J-495™

8 - 9 Seats

DIMENSIONS
231 cm x 279 cm x 95/110 H cm
DRY WEIGHT
517 kg.
TOTAL FILLED WEIGHT
2.862 kg.
AVERAGE SPA VOLUME
1.968 l
ELECTRICAL
230-240 VAC 50Hz 37A
TOTAL JETS



J-485™

6 - 7 Seats

DIMENSIONS
231 cm x 231 cm x 95/110 H cm
DRY WEIGHT
415 kg.
TOTAL FILLED WEIGHT
2.061 kg.
AVERAGE SPA VOLUME
2.006 l
ELECTRICAL
230-240VAC 50Hz 30A
TOTAL JETS



J-475™ LOUNGE

6-7 Seats

DIMENSIONS
231 cm x 231 cm x 95/110 H cm
DRY WEIGHT
419.5 kg.
TOTAL FILLED WEIGHT
2.084 kg.
AVERAGE SPA VOLUME
2.025 l
ELECTRICAL
230-240VAC 50Hz 30A
TOTAL JETS



J-445™

6 Seats

DIMENSIONS
213 cm x 213cm x 95/110H cm
DRY WEIGHT
388 kg.
TOTAL FILLED WEIGHT
1.825 kg.
AVERAGE SPA VOLUME
1.666 l
ELECTRICAL
230-240VAC 50Hz 30A
TOTAL JETS



J-435™ LOUNGE

5 - 6 Seats

DIMENSIONS
213 cm x 213 cm x 95/110 H cm
DRY WEIGHT
373 kg.
TOTAL FILLED WEIGHT
1.735 kg.
AVERAGE SPA VOLUME
1.666 l
ELECTRICAL
230-240 VAC 50Hz 30A
TOTAL JETS



J-425™

4 - 5 Seats

DIMENSIONS
193 cm x 221 cm x 86/101 H cm
DRY WEIGHT
361 kg.
TOTAL FILLED WEIGHT
1.988 kg.
AVERAGE SPA VOLUME
1.287 l
ELECTRICAL
230VAC 50Hz 30A
TOTAL JETS



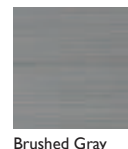
ACRYLIC OPTIONS



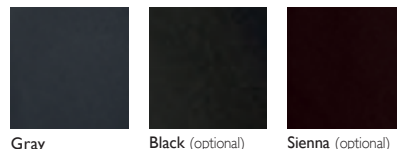
SKIRT (FINISHING)



PROFINISH™



COVER PROLAST™



COVER STANDARD VINYL





J-495™



SmartTub™

The largest spa in the Jacuzzi® range. Ideal for use when socialising or having fun with family or friends, it features a special invigorating massage function. For a very relaxing experience with all the benefits of music and colour therapy functions.



104/116 cm

229 cm



279 cm



REVERSIBLE CONTROLS



CLEARRAY® PRO3TECT™



DOUBLE WATERFALL FEATURE



MULTICOLOR



STEREO SYSTEM

TOTAL POWERPRO® JETS:	71
DRY WEIGHT:	517 kg
TOTAL FILLED WEIGHT:	2.862 kg
ELECTRICAL REQUIREMENTS:	230-240VAC 50Hz 37A
COLOURS & FINISHES:	page 110 - 111



NEW

J-485™



SmartTub™

The J-485™ offers a complete hydro-massage as well as a brand-new design. With open seats of different heights, the J-485™ spa offers support from neck to toe with a specifically designed dome providing a foot massage.



95 cm



231 cm

231 cm

TOTAL POWERPRO® JETS:	49
DRY WEIGHT:	415 kg
TOTAL FILLED WEIGHT:	2.061 kg
ELECTRICAL REQUIREMENTS:	230-240VAC 50Hz 30A
COLOURS & FINISHES:	page 110 - 111



J-475™



SmartTub™

The J-475™ is the spa designed to offer the most intense hydro-massage experiences. Thanks to the Jacuzzi® collection's wide variety of PowerPro® jets and a lounge seat that allows for full body immersion, the J-475™ ensures a particularly relaxing experience thanks also to unique details such as the illuminated waterfall.



95 cm



231 cm



231 cm

TOTAL POWERPRO® JETS:	55
DRY WEIGHT:	419.5 kg
TOTAL FILLED WEIGHT:	2.084 kg
ELECTRICAL REQUIREMENTS:	230-240VAC 50Hz 30A
COLOURS & FINISHES:	page 110 - 111



J-445™



SmartTub™

The youngest of the J-400™ collection stands out for its new design and attention to detail. J-445™ benefits from a new heat management system for optimal efficiency and energy savings.



91/109 cm



213 cm



213 cm

BTOTAL POWERPRO® JETS:	45
DRY WEIGHT:	388 kg
TOTAL FILLED WEIGHT:	1.825 kg
ELECTRICAL REQUIREMENTS:	230-240VAC 50Hz 30A
COLOURS & FINISHES:	page 110 - 111





J-435™



SmartTub™

The new J-400™ spa with lounge oozes perfection in every detail: it boasts a backlit waterfall and integrated cup holders, adjustable pillows and a multi-directional control panel, corner courtesy lights and easy inspection.



91/109 cm



REVERSIBLE CONTROLS



CLEARRAY® PRO3TECT™



DOUBLE WATERFALL FEATURE



MULTICOLOR



STEREO SYSTEM

213 cm



213 cm

TOTAL POWERPRO® JETS:	47
DRY WEIGHT:	373 kg
TOTAL FILLED WEIGHT:	1.735 kg
ELECTRICAL REQUIREMENTS:	230-240VAC 50Hz 30A
COLOURS & FINISHES:	page 110 - 111





x4-5



Inc. child seat



J-425™



SmartTub™

Our most advanced compact hydrotherapy hot tub, designed to go through double doors or into your garden building, an ideal solution for indoor or outdoor installations.



86/99 cm

193 cm



221 cm



REVERSIBLE CONTROLS



CLEARRAY® PRO3TECT™



DOUBLE WATERFALL FEATURE



MULTICOLOR



STEREO SYSTEM

TOTAL POWERPRO® JETS:	35
DRY WEIGHT:	361 kg
TOTAL FILLED WEIGHT:	1.988 kg
ELECTRICAL REQUIREMENTS:	230-240VAC 50Hz 30A
COLOURS & FINISHES:	page 110 - 111

NEW





J-300™

COMFORT
COLLECTION





J-300™

COMFORT COLLECTION

FEATURES:

- PowerPro® Jets
- Specialty PowerPro® BX and FX-L Jets
- Illuminated Control
- CLEARRAY® On-Demand
- 4-Stage Filtration System
- ProStream™ Circulation Pump
- Propolymer™ Foundation
- Tool-Free Cabinet
- Water Rainbow® Waterfall
- ProLite™ Led Lighting
- HydroSoothe™ Massage Pillow and comfortable headrests
- Exterior Lights
- ProFinish™ Cabinetry
- Illuminated Cup Holders
- CLEARRAY® PRO3TECT™ Low Output Ozone Generator
- SmartSeal® Insulation
- ProLast™ covers

OPTIONAL FEATURES:

- SmartTub™ Compatible
- BLUEWAVE® Stereo
 - Standard Speakers
 - Sub-Woofer
- ProLast™ Extreme Outdoor Hot Tub Covers



IN J-385™, J-365™ AND J-345™ FOOT DOME WITH EXCLUSIVE IX JET LIGHTING

- The J-300™ reflexology experience comes in a variety of forms from full to multiple half foot dome modules that provide an advanced foot massage.
- Positioned centrally in the footwell so that multiple users can benefit from this hydrotherapy massage feature no matter where you are sitting in the hot tub.
- This massage capability is ideal to help you unwind after a long day at work, a heavy workout or prolonged time on your feet.



IN ALL J-300™ MODELS WATERCOLOUR™ WATERFALL

- A waterfall which acts as a soothing water feature and as a relaxing head and neck massage to help unwind after a long day.
- This combined with large rotational jets for a focused back massage designed to release and soothe aches and pains.
- The Advanced ProLite™ chromotherapy lighting allows you to set the scene and create an ambiance tailored to your needs or occasion.



J-375™, J-355™, J-335™ AND J-315™ FULL BODY MASSAGE LOUNGER

- The J-300™ lounge combines all the technology of the Jacuzzi® PowerPro® jet offering giving you a full body massage from head to toe.
- A fully immersive experience with focused and deep tissue massage jets for your back and hips to softer less vigorous jet options for the back of your legs and feet.
- The lounge combined with speciality PowerPro® BX and FX-L Jets exclusive to the collection offer a more advanced lower back and leg massage perfect for recovery after a long day.

All hot tub dimensions are shown in: L x W x H



POWERPRO® JETS COLLECTION KEY



J-385™

6 - 7 Seats

DIMENSIONS

231 cm x 231 cm x 97 H cm

DRY WEIGHT

415 kg.

TOTAL FILLED WEIGHT

2.610 kg.

AVERAGE SPA VOLUME

1.893 l

ELECTRICAL

230-240 VAC 50Hz 29A

TOTAL JETS



J-375™



5 - 6 Seats

DIMENSIONS

231 cm x 231 cm x 97 H cm

DRY WEIGHT

407 kg.

TOTAL FILLED WEIGHT

2.601 kg.

AVERAGE SPA VOLUME

1.779 l

ELECTRICAL

230-240VAC 50Hz 29A

TOTAL JETS



J-365™

6 - 7 Seats

DIMENSIONS

231 cm x 214 cm x 97 H cm

DRY WEIGHT

394 kg.

TOTAL FILLED WEIGHT

2.285 kg.

AVERAGE SPA VOLUME

1.666 l

ELECTRICAL

230-240VAC 50Hz 29A

TOTAL JETS



J-355™



5 - 6 Seats

DIMENSIONS

231 cm x 214 cm x 97 H cm

DRY WEIGHT

379 kg.

TOTAL FILLED WEIGHT

2.233 kg.

AVERAGE SPA VOLUME

1.514 l

ELECTRICAL

230-240VAC 50Hz 29A

TOTAL JETS



J-345™

6 - 7 Seats

DIMENSIONS

214 cm x 214 cm x 94 H cm

DRY WEIGHT

374 kg.

TOTAL FILLED WEIGHT

2.114 kg.

AVERAGE SPA VOLUME

1.401 l

ELECTRICAL

230-240VAC 50Hz 29A

TOTAL JETS



J-335™



5 - 6 Seats

DIMENSIONS

214 cm x 214 cm x 94 H cm

DRY WEIGHT

342 kg.

TOTAL FILLED WEIGHT

2.044 kg.

AVERAGE SPA VOLUME

1.363 l

ELECTRICAL

230-240 VAC 50Hz 29A

TOTAL JETS



J-325™

4 - 5 Seats

DIMENSIONS

193 cm x 213 cm x 87 H cm

DRY WEIGHT

312 kg.

TOTAL FILLED WEIGHT

1.976 kg.

AVERAGE SPA VOLUME

1.363 l

ELECTRICAL

230-240VAC 50Hz 22A

TOTAL JETS



J-315™

2 - 3 Seats

DIMENSIONS

193 cm x 168 cm x 81 H cm

DRY WEIGHT

259 kg.

TOTAL FILLED WEIGHT

1.318 kg.

AVERAGE SPA VOLUME

871 l

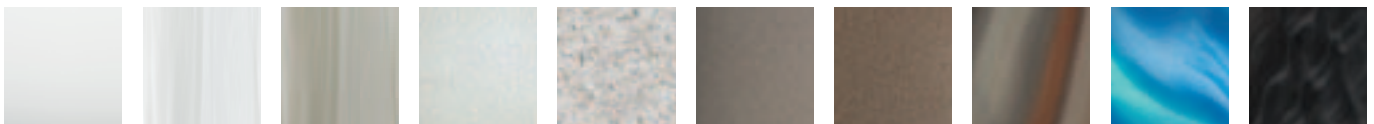
ELECTRICAL

230-240VAC 50Hz 22A

TOTAL JETS



ACRYLIC OPTIONS



Porcelain
Except J-315™

Platinum

Opal

Silver Pearl

Sahara

Sandstone

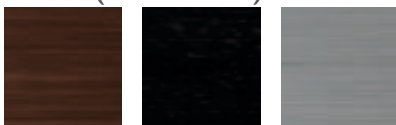
Desert Sand

Monaco

Caribbean Surf

Midnight

SKIRT (FINISHING) PROFINISH™



Modern Hardwood

Smoked Ebony

Brushed Gray

COVER INSULATING PROLAST™



Gray

Black (optional)

Sienna (optional)



x6-7



Inc. child seat



J-385™



The largest all seater hydrotherapy hot tub in the comfort collection. Great for socialising with all your friends and family.



97 cm

231 cm



231 cm



CLEARRAY®
PROTECT™



WATERFALL
FEATURE



MULTICOLOR



STEREO
SYSTEM

TOTAL POWERPRO® JETS:	51
DRY WEIGHT:	415 kg
TOTAL FILLED WEIGHT:	2.610 kg
ELECTRICAL REQUIREMENTS:	230-240VAC 50Hz 29A
COLOURS & FINISHES:	page 110 - 111

NEW





x5-6



Inc. child seat



Lounge



J-375™



Our largest hot tub in the J-300™ collection complete with a lounger offering you a varied and fully immersive bathing experience ideal for a large family or for socialising with groups of friends.



97 cm

231 cm



231 cm



CLEARRAY®
PRO3TECT™



WATERFALL
FEATURE



MULTICOLOR



STEREO
SYSTEM

TOTAL POWERPRO® JETS:	52
DRY WEIGHT:	407 kg
TOTAL FILLED WEIGHT:	2.601 kg
ELECTRICAL REQUIREMENTS:	230-240VAC 50Hz 29A
COLOURS & FINISHES:	page 110 - 111



NEW



x6-7



Inc. child seat



J-365™



A mid-sized spacious all seater social hot tub. The increased height gives more options for taller adults but doesn't forget about the rest of the family with a seat for everyone.



97 cm

231 cm



214 cm



CLEARRAY®
PROTECT™



WATERFALL
FEATURE



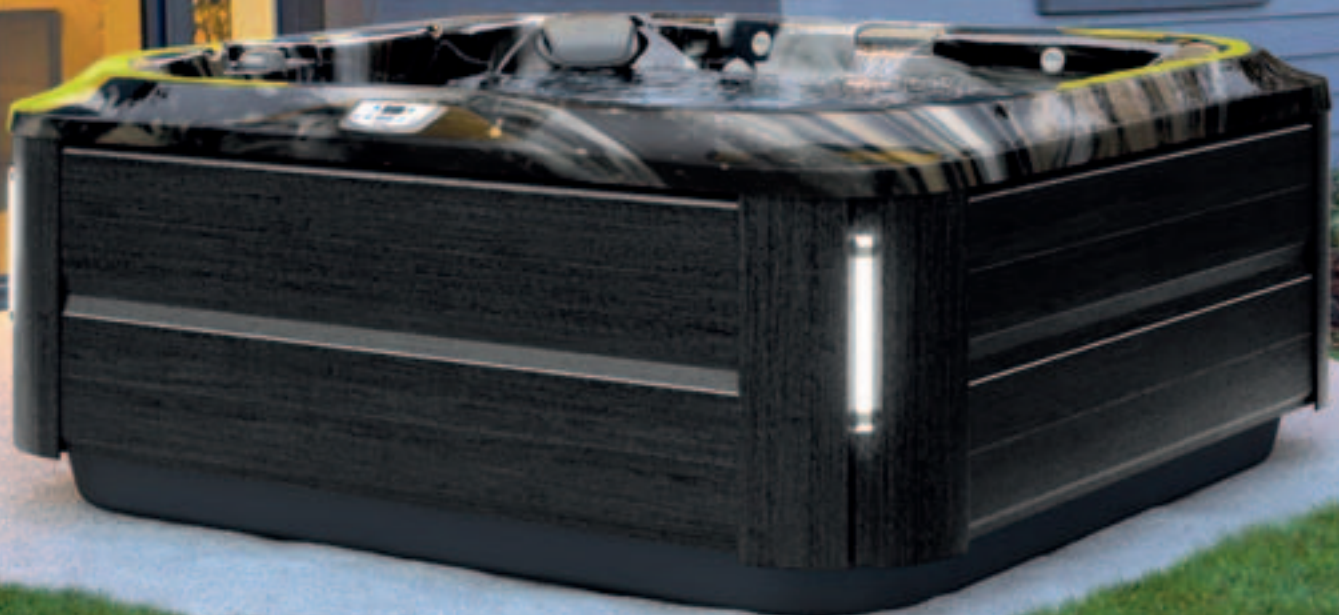
MULTICOLOR



STEREO
SYSTEM

TOTAL POWERPRO® JETS:	46
DRY WEIGHT:	394 kg
TOTAL FILLED WEIGHT:	2.285 kg
ELECTRICAL REQUIREMENTS:	230-240VAC 50Hz 29A
COLOURS & FINISHES:	page 110 - 111

NEW





x5-6



Inc. child seat



Lounge



J-355™



A mid-sized hot tub and the only product in our range to offer you two low height child seats great for young families.



97 cm

231 cm



214 cm



CLEARRAY®
PROTECT™



WATERFALL
FEATURE



MULTICOLOR



STEREO
SYSTEM

TOTAL POWERPRO® JETS:	44
DRY WEIGHT:	379 kg
TOTAL FILLED WEIGHT:	2,233 kg
ELECTRICAL REQUIREMENTS:	230-240VAC 50Hz 29A
COLOURS & FINISHES:	page 110 - 111



NEW



x5-6



Inc. child seat



J-345™



An all seater social hot tub ideal for families and socialising including four hydrotherapy corner seats and a reflexology dome for your feet.



94 cm

214 cm



214 cm



CLEARRAY®
PROTECT™



WATERFALL
FEATURE



MULTICOLOR



STEREO
SYSTEM

TOTAL POWERPRO® JETS:	41
DRY WEIGHT:	374 kg
TOTAL FILLED WEIGHT:	2.114 kg
ELECTRICAL REQUIREMENTS:	230-240VAC 50Hz 29A
COLOURS & FINISHES:	page 110 - 111

NEW





x4-5



Inc. child seat



Lounge



J-335™



Ideal for families and comes with a variety of deep and shallow seats with an open plan foot well making this spa especially suitable for younger children.



94 cm

214 cm



214 cm



CLEARRAY®
PRO3TECT™



WATERFALL
FEATURE



MULTICOLOR



STEREO
SYSTEM

TOTAL POWERPRO® JETS:	42
DRY WEIGHT:	342 kg
TOTAL FILLED WEIGHT:	2.044 kg
ELECTRICAL REQUIREMENTS:	230-240VAC 50Hz 29A
COLOURS & FINISHES:	page 110 - 111



NEW



x4-5



Inc. child seat



90 cm



J-325™



A compact hot tub that will fit through most household double doors into a conservatory or garden building.



87 cm

193 cm



213 cm



CLEARRAY®
PRO3TECT™



WATERFALL
FEATURE



MULTICOLOR

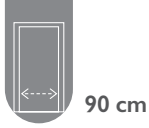


STEREO
SYSTEM

TOTAL POWERPRO® JETS:	23
DRY WEIGHT:	312 kg
TOTAL FILLED WEIGHT:	1.976 kg
ELECTRICAL REQUIREMENTS:	230-240VAC 50Hz 22A
COLOURS & FINISHES:	page 110 - 111

NEW





J-315™



A compact 2 to 3 seater hot tub ideal for small spaces, patios, terraces and balconies. this hot tub is great for couples and offers all the luxuries and technology of the larger products in this collection.



81 cm



CLEARRAY®
PROTECT™



WATERFALL
FEATURE



MULTICOLOR



STEREO
SYSTEM

TOTAL POWERPRO® JETS:	23
DRY WEIGHT:	259 kg
TOTAL FILLED WEIGHT:	1.318 kg
ELECTRICAL REQUIREMENTS:	230-240VAC 50Hz 22A
COLOURS & FINISHES:	page 110 - 111



193 cm

168 cm

NEW



J-200™

CLASSIC
COLLECTION





J-200™

CLASSIC COLLECTION

FEATURES:

- Classic & ClassicPro™ Jets
- 2-Stage Filtration System
- Comfortable Headrests
- Built-In Drink Holders
- Classic Waterfall
- Multi-Colored Lighting

OPTIONAL FEATURES:

- BLUEWAVE® Stereo
- ProLast™ and ProLast™ Extreme Outdoor Hot Tub Covers



PERFORMANCE

- Offers a complete hydromassage experience with tested jet placement
- Expands ergonomic options with a variety of jet configurations to find the right massage for you



DESIGN

- Maximizes durability and efficiency with strong acrylic shell and full foam insulation
- Features UV-resistant cabinet that stays beautiful longer



EASE OF USE

- Simplifies usage with one-button operation controls
- Facilitates maintenance with top-loading filtration system
- Compatible with SmartTub™ app for enhanced hot tub care and support, personalized tips and how-to videos



J-280™

6 - 7 Seats

TOTAL JETS
44 Classic e ClassicPro™ Jets
DIMENSIONS
229 cm x 229 cm x 93 H cm
DRY WEIGHT
401 kg.
TOTAL FILLED WEIGHT
2.558 kg.
AVERAGE SPA VOLUME
1.741 l
ELECTRICAL
230VAC 50Hz 28A

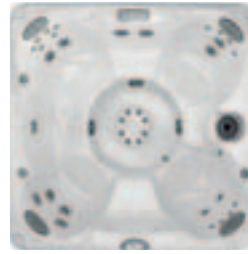


J-275™



6 Seats

TOTAL JETS
45 Classic e ClassicPro™ Jets
DIMENSIONS
229 cm x 229 cm x 93 H cm
DRY WEIGHT
366 kg.
TOTAL FILLED WEIGHT
2.371 kg.
AVERAGE SPA VOLUME
1.590 l
ELECTRICAL
230VAC 50Hz 28A



J-245™

6 - 7 Seats

TOTAL JETS
35 Classic e ClassicPro™ Jets
DIMENSIONS
213 cm x 213 cm x 91 H cm
DRY WEIGHT
375 kg.
TOTAL FILLED WEIGHT
2.153 kg.
AVERAGE SPA VOLUME
1.363 l
ELECTRICAL
230VAC 50Hz 28A



J-235™



6 Seats

TOTAL JETS
35 Classic e ClassicPro™ Jets
DIMENSIONS
213 cm x 213 cm x 91 H cm
DRY WEIGHT
326 kg.
TOTAL FILLED WEIGHT
2.066 kg.
AVERAGE SPA VOLUME
1.363 l
ELECTRICAL
230VAC 50Hz 28A



J-225™

4 - 5 Seats

TOTAL JETS
23 Classic Jets
DIMENSIONS
213 cm x 193 cm x 87 H cm
DRY WEIGHT
255 kg.
TOTAL FILLED WEIGHT
1.914 kg.
AVERAGE SPA VOLUME
1.340 l
ELECTRICAL
230VAC 50Hz 21A

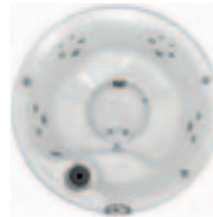


J-215™



2 - 3 Seats

TOTAL JETS
19 Classic Jets
DIMENSIONS
193 cm x 168 cm x 81 H cm
DRY WEIGHT
223 kg.
TOTAL FILLED WEIGHT
1.261 kg.
AVERAGE SPA VOLUME
833 l
ELECTRICAL
230VAC 50Hz 21A



J-210™

4 Seats

TOTAL JETS
19 Classic Jets
DIMENSIONS
Ø 198 cm x 91 H cm
DRY WEIGHT
239 kg.
TOTAL FILLED WEIGHT
1.412 kg.
AVERAGE SPA VOLUME
908 l
ELECTRICAL
230VAC 50Hz 21A

ACRYLIC OPTIONS



White Pearlescent
J-245™ and J-235™ only

Platinum

SKIRT (FINISHING) PROENDURE™



Roasted Chestnut

Silverwood

COVER INSULATING STANDARD VINYL



Bordeaux

Silverwood



x6-7



Inc. child seat



J-280™



Complete relaxation is assured in the largest and deepest hot tub in the range.



98 cm



CLEARRAY®
PRO3TECT™



2 FILTERING
LEVELS



WATERFALL
FEATURE



STEREO
SYSTEM



RGB LED
LIGHTING

229 cm



229 cm

TOTAL CLASSIC JETS:	44
DRY WEIGHT:	401 kg
TOTAL FILLED WEIGHT:	2.558 kg
ELECTRICAL REQUIREMENTS:	230 VAC 50Hz 28A
COLOURS & FINISHES:	page 110 - 111





J-275™



From fun times to serene retreats, the lounge and seat configuration are always inviting.



93 cm



CLEARRAY®
PRO3TECT™



2 FILTERING
LEVELS



WATERFALL
FEATURE



STEREO
SYSTEM



RGB LED
LIGHTING

229 cm



229 cm

TOTAL CLASSIC JETS:	44
DRY WEIGHT:	366 kg
TOTAL FILLED WEIGHT:	2.371 kg
ELECTRICAL REQUIREMENTS:	230 VAC 50Hz 28A
COLOURS & FINISHES:	page 110 - 111



J-245™



Ideal for families of 6-7 people especially with older children or as a great social hot tub for adults.



92 cm



CLEARRAY®
PRO3TECT™



2 FILTERING
LEVELS



WATERFALL
FEATURE



STEREO
SYSTEM



RGB LED
LIGHTING

214 cm



214 cm

TOTAL CLASSIC JETS:	35
DRY WEIGHT:	375 kg
TOTAL FILLED WEIGHT:	2.153 kg
ELECTRICAL REQUIREMENTS:	230 VAC 50Hz 28A
COLOURS & FINISHES:	page 110 - 111





J-235™



A family hot tub with a lounger for fun and relaxation.



92 cm



CLEARRAY®
PRO3TECT™



2 FILTERING
LEVELS



WATERFALL
FEATURE



STEREO
SYSTEM



RGB LED
LIGHTING

214 cm



214 cm

TOTAL CLASSIC JETS:	35
DRY WEIGHT:	326 kg
TOTAL FILLED WEIGHT:	2.066 kg
ELECTRICAL REQUIREMENTS:	230 VAC 50Hz 28A
COLOURS & FINISHES:	page 110 - 111



J-225™



Ideal for patios or small spaces, this value model accommodates up to five adults and offers a pivot bench seat for flexibility and comfort.



87 cm



CLEARRAY®
PRO3TECT™



2 FILTERING
LEVELS



WATERFALL
FEATURE



STEREO
SYSTEM



RGB LED
LIGHTING

193 cm



213 cm

TOTAL CLASSIC JETS:	23
DRY WEIGHT:	255 kg
TOTAL FILLED WEIGHT:	1.914kg
ELECTRICAL REQUIREMENTS:	230 VAC 50Hz 21A
COLOURS & FINISHES:	page 110 - 111

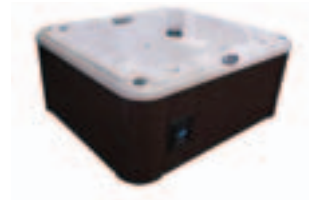




J-215™



This value model is perfect for patios or small spaces, featuring a full-body lounge and side-by-side seating that accommodates up to three adults.



81 cm



CLEARRAY®
PRO3TECT™



2 FILTERING
LEVELS



WATERFALL
FEATURE



STEREO
SYSTEM



RGB LED
LIGHTING



193 cm

168 cm

TOTAL CLASSIC JETS:	19
DRY WEIGHT:	223 kg
TOTAL FILLED WEIGHT:	1.261kg
ELECTRICAL REQUIREMENTS:	230 VAC 50Hz 21A
COLOURS & FINISHES:	page 110 - 111



J-210™



A compact space saving hot tub for 4 people ideal in small spaces, patios, balconies or terraces.



92 cm

Ø 198 cm



CLEARRAY®
PROTECT™



2 FILTERING
LEVELS

TOTAL CLASSIC JETS:	19
DRY WEIGHT:	239 kg
TOTAL FILLED WEIGHT:	1.412 kg
ELECTRICAL REQUIREMENTS:	230 VAC 50Hz 21A
COLOURS & FINISHES:	page 110 - 111





DESIGN
COLLECTION





DESIGN COLLECTION

FEATURES:

- Standard Control Panel
- Design & Finishes
- Hydrotherapy Seating
- Blowers
- 2-Stage Filtration
- Premium LED Lighting
- Sleek Integrated Waterfall
- Insulated Cover
- Freestanding or In-ground Installations
- Aromatherapy

OPTIONAL FEATURES:

- Performance kit
- CLEARRAY® PRO3TECT™



SEATS VIRTUS™

- The seven seats have increasing tilt and depth, offering targeted and complete hydrotherapy and they are suitable for anyone, even children. The overflow edge and the compensation system keep the water always at the same level, without the need to refill the Spa.



VIRTUS™ FILTERING SYSTEM

- VIRTUS™ is equipped with an integrated polymer filter, a feature that is a first for a freestanding Spa. It is an improvement that makes the installation easier and more convenient, not needing to arrange external technical compartments.



SKYLOUNGE®, UNIQUE AND CITY™ SPA CUSTOMISABLE TO YOUR NEEDS

- Elegant, minimalist and refined, these hot tubs are designed to be perfectly in line with the latest trends.
- You can dress and style the exterior panelling with the materials of your choice to perfectly co-ordinate with your home environment.
- These hot tubs give the greatest possible freedom of installation: outdoors or indoors, above or in-ground, in any environment or situation.

All hot tub dimensions are shown in: L x W x H



POWERPRO® JETS COLLECTION KEY



Virtus™ LOUNGE

6 - 7 Seats
DIMENSIONS
 250 cm x 215 cm x 93 H cm
DRY WEIGHT
 410 kg.
TOTAL FILLED WEIGHT
 2.450 kg.
AVERAGE SPA VOLUME
 1.500 l
ELECTRICAL
 220-240 V F+N 50Hz - 32A
 380-415 V 3F+N 50 Hz - 16 A



Profile LOUNGE

5 - 6 Seats
DIMENSIONS
 235 cm x 211 cm x 93 H cm
 239 cm x 215 cm x 93 H cm
DRY WEIGHT
 400 kg.
TOTAL FILLED WEIGHT
 2.510 kg.
AVERAGE SPA VOLUME
 1.600 l
ELECTRICAL
 220-240 VAC 50/60Hz



Santorini LOUNGE

5 Seats
DIMENSIONS
 230 cm x 215 cm x 90 cm
DRY WEIGHT
 300 kg.
TOTAL FILLED WEIGHT
 2.100 kg.
AVERAGE SPA VOLUME
 1.250 l
ELECTRICAL
 220-240 VAC 50/60Hz



Delos LOUNGE

4 Seats
DIMENSIONS
 215 cm x 190 cm x 80 H cm
DRY WEIGHT
 250 kg.
TOTAL FILLED WEIGHT
 1.390 kg.
AVERAGE SPA VOLUME
 860 l
ELECTRICAL
 220-240 VAC 50/60Hz



Delfi LOUNGE

4 Seats
DIMENSIONS
 190 cm x 190 cm x 80 H cm
DRY WEIGHT
 270 kg.
TOTAL FILLED WEIGHT
 1.440 kg.
AVERAGE SPA VOLUME
 700 l
ELECTRICAL
 220-240 VAC 50/60Hz



Skylounge® LOUNGE

4 Seats
DIMENSIONS
 190 cm x 190 cm x 78 H cm
DRY WEIGHT
 220 kg.
TOTAL FILLED WEIGHT
 985 kg.
AVERAGE SPA VOLUME
 600 l
ELECTRICAL
 220-240VAC 50/60Hz



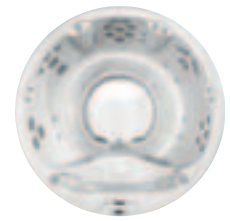
Unique LOUNGE

3 Seats
DIMENSIONS
 190 cm x 150 cm x 80 H cm
DRY WEIGHT
 240 kg.
TOTAL FILLED WEIGHT
 1.270 kg.
AVERAGE SPA VOLUME
 630 l
ELECTRICAL
 220-240 VAC 50/60Hz



City™ SPA LOUNGE

2 Seats
DIMENSIONS
 160 cm x 150 cm x 75 cm
DRY WEIGHT
 220 kg.
TOTAL FILLED WEIGHT
 790 kg.
AVERAGE SPA VOLUME
 470 l
ELECTRICAL
 220-240 VAC 50/60Hz



Allimia

5 - 6 Seats
DIMENSIONS
 Ø 212 cm x 90 H cm
DRY WEIGHT
 290 kg.
TOTAL FILLED WEIGHT
 1.940 kg.
AVERAGE SPA VOLUME
 1.370 l
ELECTRICAL
 220-240 VAC 50/60Hz

TOTAL JETS
 34 CLASSIC JETS

ACRYLIC OPTIONS



White



Platinum
 Except City SPA

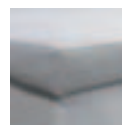


Cobalt Except Unique
 and City SPA

COVER INSULATING



Marine-grade fabric
 Virtus



Fabric Ice Sunbed
 Unique only

COVER STANDARD VINYL



Silverwood
 Profile



Platin City SPA, Delos, Delfi,
 Santorini and Unique

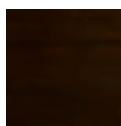
SKIRT (FINISHING)



Silverwood
 Except Unique



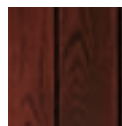
Sahara City SPA and
 Unique only



Wengé
 Unique only



Teak 1
 Unique only



Teak 2
 Profile only



Teak 3 Except
 Unique and Allimia



Veined oak City
 SPA, Delos, Delfi
 and Santorini



Sasha
 City SPA only



Customisable panels
 Skylounge, Unique and
 City SPA only



Virtus™

design
Dodo Arslan & Jacuzzi® Design

This new Spa dedicated to the hospitality field is the perfect space to share a moment of wellness, have fun together and free your mind.



93 cm

250 cm



215 cm



CLEARRAY®
PRO3TECT™



QUICK DRAIN®



MULTICOLOR



ECO SHIELD

TOTAL POWERPRO® JETS:	50
DRY WEIGHT:	410 kg
TOTAL FILLED WEIGHT:	2.450 kg
ELECTRICAL REQUIREMENTS:	220-240 V F+N 50Hz - 32A 380-415 V 3F+N 50 Hz - 16 A
COLOURS & FINISHES:	page 110 - 111



Profile

design Jacuzzi® Design

An infinity swimming pool effect with automatic water levelling technology, which refills the hot tub when water is lost through use and evaporation, a truly unique and beautiful design.



93 cm

239 cm



CLEARRAY® PRO3TECT™



2 FILTERING LEVELS



MULTICOLOR



AROMATHERAPY



215 cm

TOTAL POWERPRO® JETS:	31
DRY WEIGHT:	400 kg
TOTAL FILLED WEIGHT:	2.510 kg
ELECTRICAL REQUIREMENTS:	220-240 VAC 50/60Hz
COLOURS & FINISHES:	page 110 - 111





Santorini Pro, Pro Sound

design
Kaluderovic & Condini

The only hot tub in the range with a double lounge, a wide rim for ease of access and customised large headrests for added comfort.



90 cm



CLEARRAY®
PRO3TECT™



2 FILTERING
LEVELS



CASCATA



MULTICOLOR



AROMATHERAPY

215 cm



230 cm

TOTAL POWERPRO® JETS:	29
DRY WEIGHT:	300 kg
TOTAL FILLED WEIGHT:	2.100 kg
ELECTRICAL REQUIREMENTS:	220-240 VAC 50/60Hz
COLOURS & FINISHES:	page 110 - 111





x4



Inc. child seat



90 cm



Lounge



Delos, Pro, Pro Sound

design
Kaluderovic & Condini

Contemporary minimalist design with a wider rim for easy access combined with comfortable headrests which can be used as cushioned seating.



80 cm



CLEARRAY®
PRO3TECT™



2 FILTERING
LEVELS



WATERFALL
FEATURE



MULTICOLOR



AROMATHERAPY

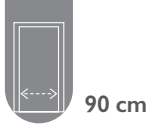
215 cm



190 cm

TOTAL POWERPRO® JETS:	16
DRY WEIGHT:	250 kg
TOTAL FILLED WEIGHT:	1.390 kg
ELECTRICAL REQUIREMENTS:	220-240 VAC 50/60Hz
COLOURS & FINISHES:	page 110 - 111





Delfi, Pro, Pro Sound

design
Kaluderovic & Condini

Ideal for small spaces, patios, terraces and balconies – whilst still delivering a perfect blend of contemporary design and comfort.



CLEARRAY®
PRO3TECT™



2 FILTERING
LEVELS



WATERFALL
FEATURE



MULTICOLOR



AROMATHERAPY



80 cm

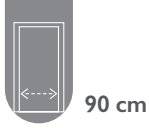
190 cm



190 cm

TOTAL POWERPRO® JETS:	16
DRY WEIGHT:	270 kg
TOTAL FILLED WEIGHT:	1.440 kg
ELECTRICAL REQUIREMENTS:	220-240 VAC 50/60Hz
COLOURS & FINISHES:	page 110 - 111





Skylounge®

design
Kaluderovic & Condini

Designed especially for smaller spaces, Skylounge® can accommodate up to four people and is characterized by a soft shape with raised edge: complete with comfortable headrests. The raised floor offers two depths, with PowerPro® jets that target different parts of the body. The underwater LED light colours the water, creating a charming ambiance at night. Sensations previously available only at a professional Spa... enhancing our quality of life more and more.



78 cm

190 cm



190 cm



CLEARRAY®
PROTECT™



RAINBOW



LOW NOISE



ECO SHIELD

TOTAL POWERPRO® JETS:	10
DRY WEIGHT:	220 kg
TOTAL FILLED WEIGHT:	985 kg
ELECTRICAL REQUIREMENTS:	220-240VAC 50/60Hz
COLOURS & FINISHES:	page 110 - 111





x2



80 cm



Lounge



City™ SPA

design
Kaluderovic & Condini

For when functionality needs to fit a compact environment and is ideal for couples to bathe side-by-side as a solution for balconies, terraces and small patios.



75 cm



CLEARRAY®
PRO3TECT™



AUDIO SYSTEM
WIRELESS



WATERFALL
FEATURE



MULTICOLOR

TOTAL POWERPRO® JETS:	20
DRY WEIGHT:	220 kg
TOTAL FILLED WEIGHT:	790 kg
ELECTRICAL REQUIREMENTS:	220-240 VAC 50/60Hz
COLOURS & FINISHES:	page 110 - 111



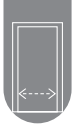
150 cm

150 cm





x3



90 cm



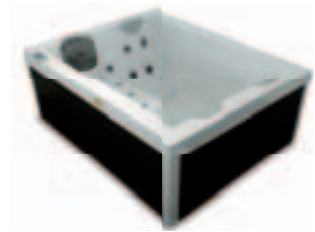
Lounge



Unique

design
Carlo Urbinati

The ideal design for any kind of environment thanks to its customisable panels, this hot tub offers side-by-side bathing and is ideal for couples – perfect for small patios, terraces or balconies.



80 cm



CLEARRAY®
PRO3TECT™



AUDIO SYSTEM
WIRELESS



WATERFALL
FEATURE



MULTICOLOR

TOTAL POWERPRO® JETS:	14
DRY WEIGHT:	240 kg
TOTAL FILLED WEIGHT:	1.270 kg
ELECTRICAL REQUIREMENTS:	220-240 VAC 50/60Hz
COLOURS & FINISHES:	page 110 - 111

190 cm



150 cm



 x5-6
  Inc. child seat
  90 cm



Alimia

design
Jacuzzi® Design

A large circular hot tub with an encompassed hydrotherapy solution ideal for couples and small families.



90 cm

∅ 212 cm



CLEARRAY®
PRO3TECT™



WATERFALL
FEATURE



MULTICOLOR



AROMATHERAPY



TOTAL POWERPRO® JETS:	34 Classic Jets
DRY WEIGHT:	290 kg
TOTAL FILLED WEIGHT:	1.940 kg
ELECTRICAL REQUIREMENTS:	220-240 VAC 50/60Hz
COLOURS & FINISHES:	page 110 - 111



PROFESSIONAL
COLLECTION





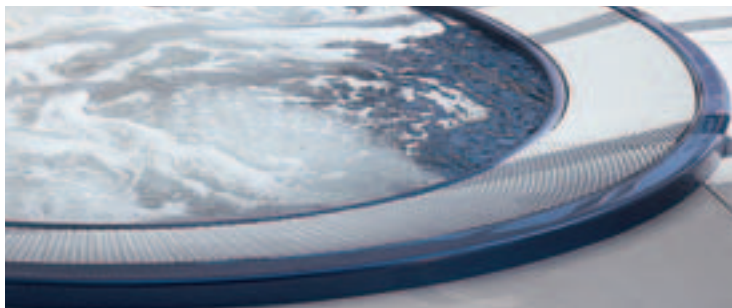
PROFESSIONAL COLLECTION

FEATURES:

- Control Buttons
- Design & Finishes
- Deep Immersion Seating
- Insulated Cover
- Quik drain
- PowerPro® Jets
- Premium LED Lighting
- Integrated Steps & Child Seating
- Aromatherapy
- Low noise

OPTIONAL FEATURES:

- Booster Kit
- Heat Exchanger
- Ozone generator
- Compensation Tank



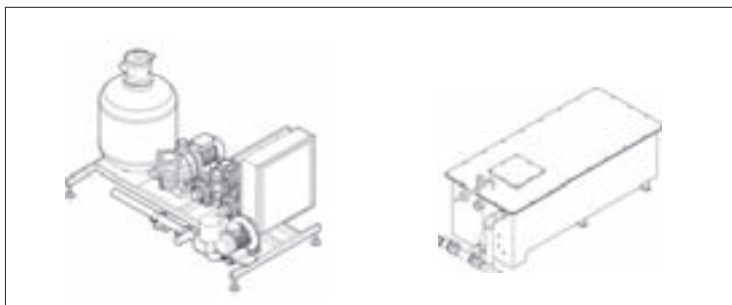
IN ENJOY, VIRGINIA, SIENNA, ALIMIA, PROFILE PRO AND VIRTUS™ PRO OVERFLOW RIM & AUTOMATIC WATER FILL

- A distinctive feature of the Professional range is the 15° angled overflow grid around the surface of the hot tub. It collects surface water, which overflows through the grid to a compensation tank. The water is then moved through a filtration system, cleaned and pumped back into the base of the hot tub to be re-used. Thanks to the slant of the grid the water remains at spa deck level even if there is a rocking motion, so they can be installed on yachts and ships.



IN ENJOY, VIRGINIA, SIENNA, ALIMIA, PROFILE PRO AND VIRTUS™ PRO IN-GROUND INSTALLATION

- Different to a domestic hot tub, installation is in-ground and involves installing a separate spa-pack and compensation tank to allow water to continuously move through a quartz sand filter where it is cleaned before flowing back into the tub for re-use.
- Only Profile Pro and Virtus™ Pro can be installed freestanding with the adjacent spa pack.



IN ENJOY, VIRGINIA, SIENNA, ALIMIA, PROFILE PRO AND VIRTUS™ PRO SAND FILTER (SPA-PACK) & COMPENSATION TANK

The professional spa pack includes:

- Sand Filter (sand included)
- Set of pumps (hydromassage, circulation and blower compressor)
- With or without heating (electric heater or heat exchanger)
- Control system
- Compensation tank is available in a standard or low height. Profile Pro features integrated tanks.

All hot tub dimensions are shown in: L x W x H



POWERPRO® JETS COLLECTION KEY



Enjoy



6 Seats

DIMENSIONS

250 cm x 250 cm x 98 H cm

DRY WEIGHT

250 kg.

TOTAL FILLED WEIGHT

2.350 kg.

AVERAGE SPA VOLUME

1.700 l

ELECTRICAL

EU: 380/415V 3F+N

220/240V F+N

TOTAL JETS:



Virginia



6 - 7 Seats

DIMENSIONS

257 cm x 219 cm x 98 H cm

DRY WEIGHT

250 kg.

TOTAL FILLED WEIGHT

2.350 kg.

AVERAGE SPA VOLUME

1.700 l

ELECTRICAL

EU: 380/415V 3F+N

220/240V F+N

TOTAL JETS:



Sienna

7 - 8 Seats

DIMENSIONS

257 cm x 219 cm x 98 cm

DRY WEIGHT

200 kg.

TOTAL FILLED WEIGHT

1.960 kg.

AVERAGE SPA VOLUME

1.430 l

ELECTRICAL

EU: 380/415V 3F+N

220/240V F+N

TOTAL JETS:



Alimia

6 - 7 Seats

DIMENSIONS

Ø 237 cm x 98 H cm

DRY WEIGHT

180 kg.

TOTAL FILLED WEIGHT

1.840 kg.

AVERAGE SPA VOLUME

1.350 l

ELECTRICAL

EU: 380/415V 3F+N

220/240V F+N

TOTAL JETS:



Virtus™ Pro



6 - 7 Seats

DIMENSIONS

250 cm x 215 cm x 93 H cm

DRY WEIGHT

460 kg.

TOTAL FILLED WEIGHT

2.760 kg.

AVERAGE SPA VOLUME

2.300 l

ELECTRICAL

220-240 V F+N 50Hz - 32A

380-415 V 3F+N 50 Hz - 16 A

TOTAL JETS:



Profile Pro



5 - 6 Seats

DIMENSIONS

235/239 cm x 211/215 cm x 93 H cm

DRY WEIGHT

350 kg.

TOTAL FILLED WEIGHT

2.460 kg.

AVERAGE SPA VOLUME

1.600 l

ELECTRICAL

EU: 380/415V 3F+N

220/240V F+N

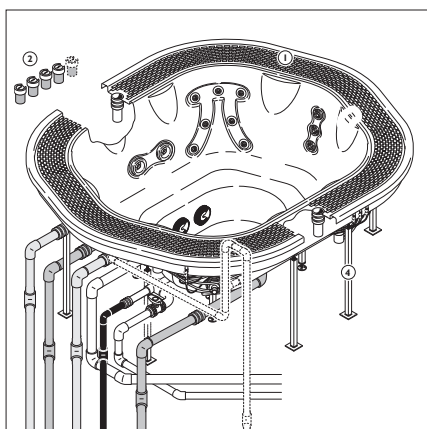
TOTAL JETS:



SPA-PACK

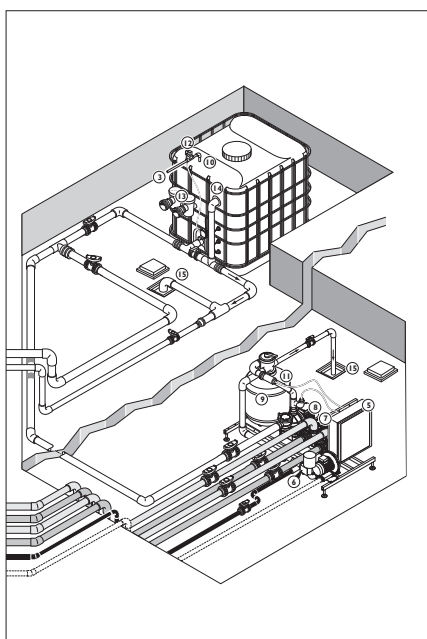
The Professional hot tubs baths are also distinguished by the very low noise level of the system. the Jacuzzi® technicians have in fact designed the set of pumps, the water heating system consisting of the electric heater and of the heatexchangers, the compressors for the blowers and an optional ozonizer (indispensable to further increase water quality) in an independent technical compartment (Spa-Pack) that can positioned at a distance of up to 6 metres.

Thanks to superior quality filtering, the quartz sand filter makes these hot tubs ideal for professional use. the filtered water flows back to the hot tub through the ground drainage point: this method, as well as offering the visual effect of an "underwater fountain", sends the particles deposited at the bottom of the hot tub into circulation making them more likely to be captured by the jets that send the water to the filter. Although it is technically complex, the system is easy to manage even by home users by means of pneumatically controlled buttons.



Spa and piping system

- 1 Overflow channel with grid
- 2 Pneumatic buttons
- 3 Connections to plumbing
- 4 Perimeter metal supports

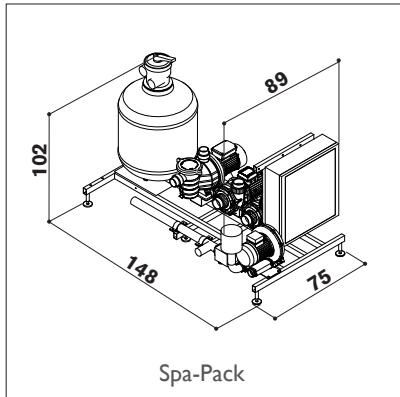


Spa-Pack

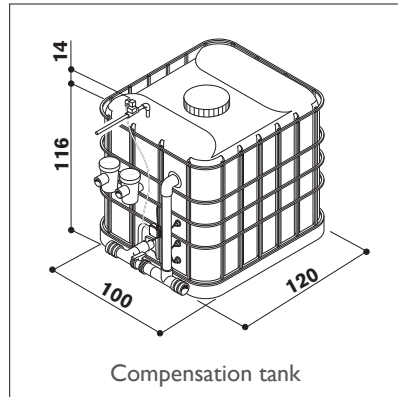
- 5 Electric wiring box
- 6 Optional:
- 6a Heater (12 kW)
- 6b Heat exchanger
- 7 Hydromassage pumps (2+2 hp)
- 8 Filtering pump
- 9 Filtro a sabbia quarzifera
- 10 Safety switch
- 11 Temperature sensor

Compensation tank

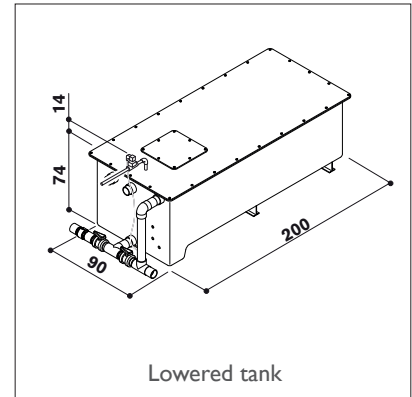
- 12 Water loading/filling solenoid valve (3/4")
- 13 Pre-filters
- 14 Overflow
- 15 Ground drainage points



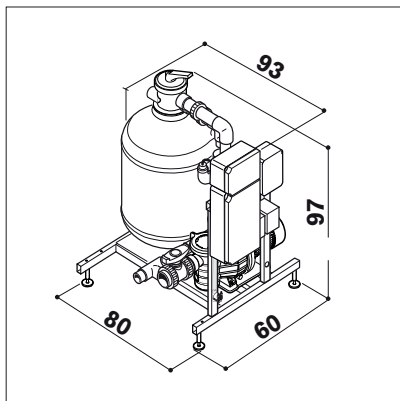
Spa-Pack



Compensation tank

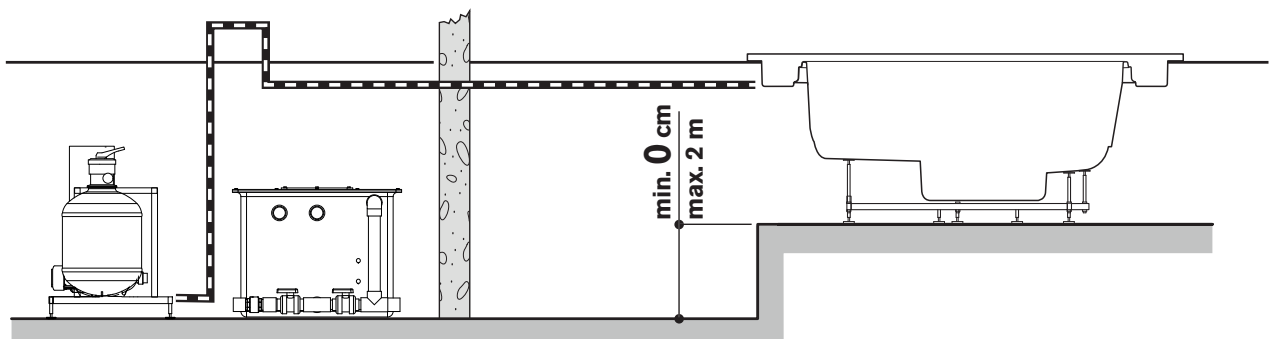
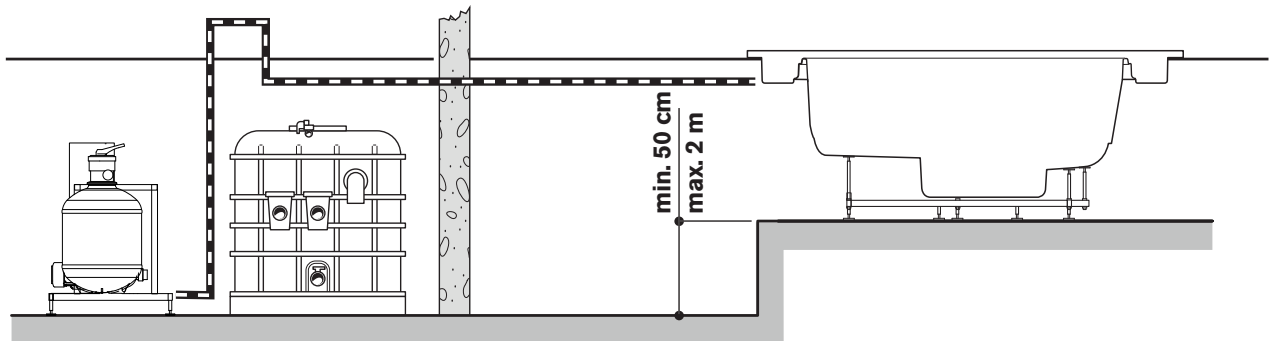


Lowered tank



Booster Kit

Professional water analysis and control system. A completely automated system for disinfection and PH control with additional filtering section and downloadable reports.

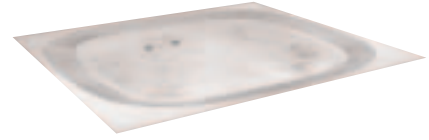




Enjoy

design
Kaluderovic & Condini

A large spa designed for use in public areas within hotels, swimming pools and wellness environments. Complete with a lounge this spa really offers your guests a full wellness journey.



98 cm

250 cm



250 cm



SAND FILTER



LOW NOISE



MULTICOLOR



AROMATHERAPY

TOTAL POWERPRO® JETS:	38 Top + 18 Base
DRY WEIGHT:	250 kg
TOTAL FILLED WEIGHT:	2.350 kg
ELECTRICAL REQUIREMENTS:	EU: 380/415 3F+N 220/240V F+N
COLOURS & FINISHES:	page 110 - 111



Virginia

A large commercial spa ideal for installation in public wellness environments. The practical corner entry steps ensure a safe, considerate and unobtrusive bathing experience.



98 cm

257 cm



219 cm



SAND FILTER



LOW NOISE



MULTICOLOR



AROMATHERAPY

TOTAL POWERPRO® JETS:	34
DRY WEIGHT:	250 kg
TOTAL FILLED WEIGHT:	2.350 kg
ELECTRICAL REQUIREMENTS:	EU: 380/415 3F+N 220/240V F+N
COLOURS & FINISHES:	page 110 - 111



Sienna

Our largest all seater commercial spa, designed for use in public environments and ideal for large groups. Spacious and comfortable this spa allows multiple users to relax and enjoy what a true spa experience should be.



98 cm

257 cm



219 cm



SAND FILTER



LOW NOISE



MULTICOLOR



AROMATHERAPY

TOTAL POWERPRO® JETS:	30
DRY WEIGHT:	200 kg
TOTAL FILLED WEIGHT:	1.960 kg
ELECTRICAL REQUIREMENTS:	EU: 380/415 3F+N 220/240V F+N
COLOURS & FINISHES:	page 110 - 111



Alimia

The circular shape surpasses the concept of design. Roomy and comfortable, it is loved above all by those who consider physical wellness and intimacy of the same importance.



98 cm

Ø 238 cm



SAND FILTER



LOW NOISE



MULTICOLOR



AROMATHERAPY

TOTAL POWERPRO® JETS:	28
DRY WEIGHT:	180 kg
TOTAL FILLED WEIGHT:	1.840 kg
ELECTRICAL REQUIREMENTS:	EU: 380/415 3F+N 220/240V F+N
COLOURS & FINISHES:	page 110 - 111





Virtus™ Pro

design
Dodo Arslan e Jacuzzi® Design

Inspired by the Nautilus seashell, the shell appears to be molded by water and it has a spiral shape that guarantees a quick and complete draining when emptied, avoiding stagnation.



93 cm

250 cm



215 cm



CLEARRAY®
PRO3TECT™



QUICK DRAIN®



MULTICOLOR



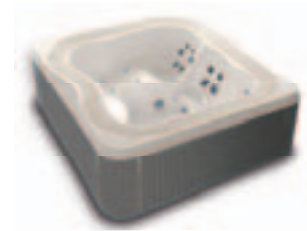
ECO SHIELD

TOTAL POWERPRO® JETS:	50
DRY WEIGHT:	460 kg
TOTAL FILLED WEIGHT:	2.760 kg
ELECTRICAL REQUIREMENTS:	220-240 V F+N 50Hz - 32A 380-415 V 3F+N 50 Hz - 16 A
COLOURS & FINISHES:	page. 110 - 111



Profile Pro

An infinity swimming pool effect with automatic water levelling technology, which refills the hot tub when water is lost through use of evaporation. Our only commercial spa which can be installed above or below the ground.



93 cm

235/239 cm



211/215 cm



SAND FILTER



LOW NOISE



MULTICOLOR



AROMATHERAPY

TOTAL POWERPRO® JETS:	31
DRY WEIGHT:	350 kg
TOTAL FILLED WEIGHT:	2.460 kg
ELECTRICAL REQUIREMENTS:	EU: 380/415 3F+N 220/240V F+N
COLOURS & FINISHES:	page. 110 - 111



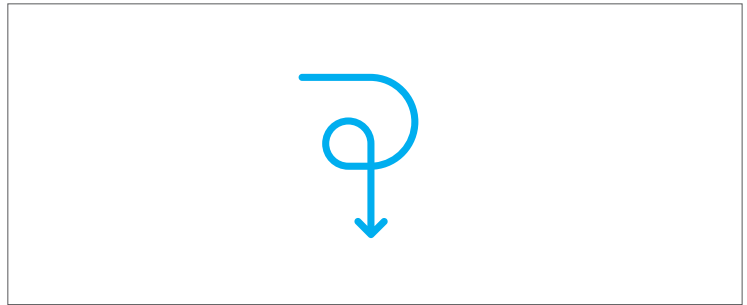
LODGE COLLECTION

FEATURES:

- CLEARRAY® PRO₃TECT™
- LED Control Panel
- Above or In-ground Installation
- 90cm in Height
- Premium LED Lighting
- Integrated Steps & Child Seating
- Insulated Cover

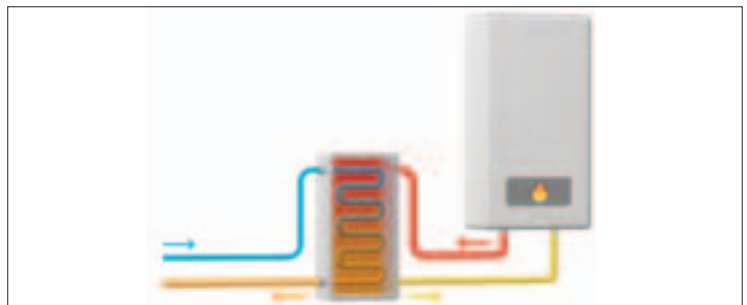
OPTIONAL FEATURES:

- Performance Kit
- Nordic Kit
- Heat Plus
- Heat Exchanger



COMPLETE & QUICK DRAIN®

- All the water is emptied out of the spa through a drain located in the base. This prevents stagnant water and allows you to thoroughly clean the hot tub during change overs for your next guests.
- The Quick Drain® device reduces drain times by up to 50% compared to standard hose pipes or submersible pumps.



HEATER OR HEAT EXCHANGER

- The Lodge range can be fitted with an upgraded electric heater or a heat exchanger, which is an inexpensive, green solution that exploits the heat produced by your facility's heating system or by renewable sources. To shorten heating time even further you can use the heat plus option in addition to the standard heater.
- For an even greener, more efficient and cost-effective choice this range can also be fitted with an Eco Heat pump that transfers ambient heat to the water.



SAND FILTRATION (OPTIONAL)

- Optional sand filtration gives long standing assurance of hygiene and cleanliness because it traps the impurities in the water. It is easy to remove, must be cleaned on a regular basis and replaced when necessary.

All hot tub dimensions are shown in: L x W x H

D DIRECT JETS
 M MINI JETS
 L LUXURY JETS
 P PULSATOR JETS

LOUNGE

CLASSIC STAINLESS STEEL JETS



Lodge L



5 - 6 Seats

DIMENSIONS

223 cm x 211 cm x 90 H cm

DRY WEIGHT

348 kg.

TOTAL FILLED WEIGHT

2.168 kg.

AVERAGE SPA VOLUME

1.420 l

ELECTRICAL

220-240 VAC 50/60Hz

TOTAL JETS:

9
5
2
8
 + 14 BLOWER



Lodge M

4 - 5 Seats

DIMENSIONS

200 cm x 185 cm x 90 H cm

DRY WEIGHT

260 kg.

TOTAL FILLED WEIGHT

1.360 kg.

AVERAGE SPA VOLUME

880 l

ELECTRICAL

220-240 VAC 50/60Hz

TOTAL JETS:

6
7
3
4
 + 12 BLOWER



Lodge S



2 - 3 Seats

DIMENSIONS

185 cm x 165 cm x 90 H cm

DRY WEIGHT

245 kg.

TOTAL FILLED WEIGHT

1.195 kg.

AVERAGE SPA VOLUME

750 l

ELECTRICAL

220-240 VAC 50/60Hz

TOTAL JETS:

5
3
8
 + 10 BLOWER

OPTIONS ACRYLIQUE



White



Platinum

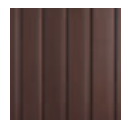


White Pearlescent

SKIRT (FINISHING)



Silverwood



Roasted Chestnut

COVER INSULATING STANDARD VINYL



Silverwood





x5-6



Inc. child seat



Lounge



Lodge L



5 seats provide a comfortable place for your guests to sit and relax whilst an additional lounge seat allows another guest to fully immerse themselves in the water, Lodge L is ideal for larger holiday homes.



90 cm

223 cm



211 cm



CLEARRAY®
PRO3TECT™



QUICK DRAIN®



MULTICOLOR

TOTAL CLASSIC JETS:	24 Hydro + 14 Blower
DRY WEIGHT:	348 kg
TOTAL FILLED WEIGHT:	2.168 kg
ELECTRICAL REQUIREMENTS:	220-240 VAC 50/60 Hz
COLOURS & FINISHES:	page 110 - 111





x4-5



Inc. child seat



Lodge M

With seating for 4 to 5 people, Lodge M is an ideal addition to any medium sized holiday home and features ergonomic seating, which provides a comfortable place for your guests to sit.



CLEARRAY®
PRO3TECT™



QUICK DRAIN®



MULTICOLOR

TOTAL CLASSIC JETS:	20 Idro + 12 Blower
DRY WEIGHT:	260 kg
TOTAL FILLED WEIGHT:	1.360 kg
ELECTRICAL REQUIREMENTS:	220-240 VAC 50/60 Hz
COLOURS & FINISHES:	page 110 - 111



Lodge S

Ideal for smaller holiday homes, Lodge S provides seating for 2 to 3 adults. 2 ergonomic seats allows your guests to sit in comfort whilst a third lounge seat provides a place for another guest to fully immerse their body.



CLEARRAY®
PRO3TECT™



QUICK DRAIN®



MULTICOLOR



TOTAL CLASSIC JETS:	16 Idro + 10 Blower
DRY WEIGHT:	245 kg
TOTAL FILLED WEIGHT:	1.195 kg
ELECTRICAL REQUIREMENTS:	220-240 VAC 50/60 Hz
COLOURS & FINISHES:	page 110 - 111



SWIM SPA COLLECTION





SWIM SPA COLLECTION

FEATURES:

- The rotational jet therapy seat
- Focus seat
- Cool down seat
- The rifling jet therapy seat
- Alaskan safety cover
- Premium quality cabinetry

OPTIONAL FEATURES:

- Aquatic fitness guide
- Kit aqua-rowing
- 48" Wall mounted exercise bars
- Aqua fitness package
- 4 Tier step
- Float cover with tie downs



PERFORMANCE

The Powerpro® Swim Current jet is engineered to ensure water is flowing properly. The wide stream jet generates a smooth predictable current with no turbulence for an advanced swim experience.



DESIGN

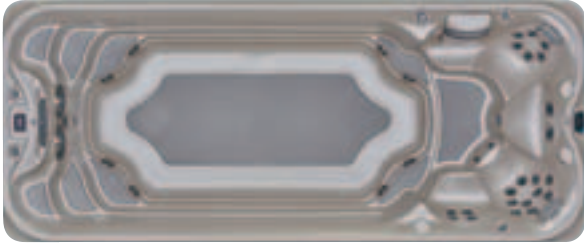
Best for both swimming and Relaxing. Hips in shell stop reflective wave. The suction jets are located at seated end to create conveyor belt effect for water flow.



EASE OF USE

Manage your workouts with the new display and check your performance with Water Watch, the only swim watch created especially for Swim Spas. A trainer on your wrist, it analyses your results and records your performance.

All hot tub dimensions are shown in: L x W x H



PowerPro™ J-19

4 Seats

DIMENSIONS

564 cm x 236 cm x 135 cm

USEFUL SWIMMING AREA

376 cm

DRY WEIGHT:

1.374 kg.

TOTAL FILLED WEIGHT

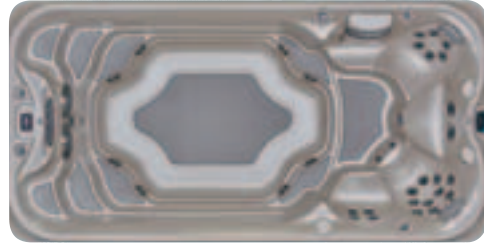
10.412 kg.

AVERAGE SPA VOLUME

9.038 l

TOTAL JETS:

28 POWERPRO® JETS



PowerPro™ J-16

4 Seats

DIMENSIONS

472 cm x 236 cm x 135 cm

USEFUL

284 cm

DRY WEIGHT:

1.162 kg.

TOTAL FILLED WEIGHT

8.800 kg.

AVERAGE SPA VOLUME

7.638 l

TOTAL JETS:

28 POWERPRO® JETS



PowerActive™ J-19

4 Seats

DIMENSIONS

564 cm x 236 cm x 135 cm

USEFUL

376 cm

DRY WEIGHT:

1.374 kg.

TOTAL FILLED WEIGHT

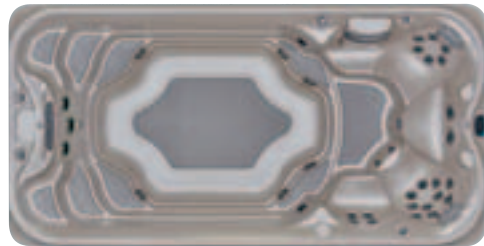
10.412 kg.

AVERAGE SPA VOLUME

9.038 l

TOTAL JETS:

28 POWERPRO® JETS



PowerActive™ J-16

4 Seats

DIMENSIONS

472 cm x 236 cm x 135 cm

USEFUL

284 cm

DRY WEIGHT:

1.162 kg.

TOTAL FILLED WEIGHT

8.800 kg.

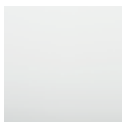
AVERAGE SPA VOLUME

7.638 l

TOTAL JETS:

28 POWERPRO® JETS

ACRYLIC OPTIONS



Porcelain

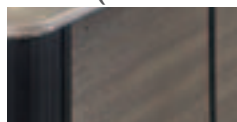


Platinum



Silver Pearl

SKIRT (FINISHING)



Silverwood/Black

FLOAT COVER





PowerPro™ J-19

The Jacuzzi® Swim Spa PowerPro® PX pool is designed to generate a strong, regular counter-current, ideal for intensive, all year round training sessions.



CLEARRAY®
PRO3TECT™



POWER PRO
SWIM CURRENT

USEFUL SWIMMING AREA:	376 cm
DRY WEIGHT:	1374 kg
TOTAL FILLED WEIGHT:	10412 kg
AVERAGE SPA VOLUME:	9038 l
COLOURS & FINISHES:	page 110 - 111

236 cm



564 cm





PowerPro™ J-16

The 5-metre Jacuzzi® Swim Spa PowerPro® pool offers optimum comfort for both swimming and water aerobics. Ideal for intensive training.



CLEARRAY®
PRO3TECT™



POWER PRO
SWIM CURRENT

USEFUL SWIMMING AREA:	284 cm
DRY WEIGHT:	1162 kg
TOTAL FILLED WEIGHT:	8800 kg
AVERAGE SPA VOLUME:	7638 l
COLOURS & FINISHES:	page 110 - 111

236 cm



472 cm





PowerActive™ J-19

The 6-metre Jacuzzi® Swim Spa PowerActive™ pool combines swimming, fitness and fun for the whole family, all year round.



CLEARRAY®
PRO3TECT™



POWER PRO
SWIM ACTIVE FLO

USEFUL SWIMMING AREA:	376 cm
DRY WEIGHT:	1374 kg
TOTAL FILLED WEIGHT:	10412 kg
AVERAGE SPA VOLUME:	9038 l
COLOURS & FINISHES:	page 110 - 111

236 cm



564 cm





PowerActive™ J-16

The 5-metre Jacuzzi® Swim Spa PowerActive™ pool offers a continual and regular current for a complete swimming experience. Ideal entertainment for the whole family.



CLEARRAY®
PRO3TECT™



POWER PRO
SWIM ACTIVE FLO

USEFUL SWIMMING AREA:	284 cm
DRY WEIGHT:	1162 kg
TOTAL FILLED WEIGHT:	8800 kg
AVERAGE SPA VOLUME:	7638 l
COLOURS & FINISHES:	page 110 - 111

236 cm



472 cm



BRING THE
KUDOS OF OUR
BRAND TO
YOUR COMPANY.





WELLNESS
HOTEL



WELLNESS
RESORT



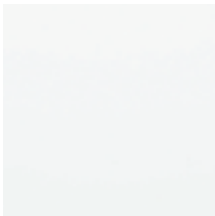


SHELL COLOURS

Once you've chosen a hot tub to suit your needs perfectly, you can finish the shell in a wide range of colours and materials. Ensuring your hot tub is everything you need in style and design as well as performance.

J-500™, J-400™, J-300™ Collection

PORCELAIN



Except J-315™

SANDSTONE



Except J-495™

SILVER PEARL



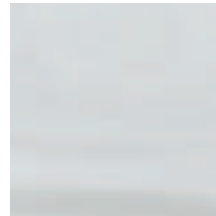
Except J-495™

DESERT SAND

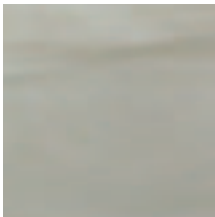


Except J-300™

PLATINUM

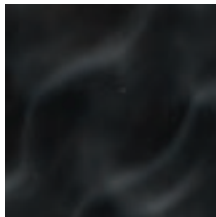


OPAL



Except J-495™

MIDNIGHT



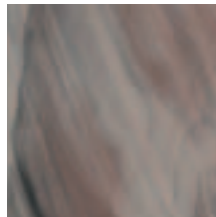
Except J-495™

SAHARA



Except J-495™

MONACO



Except J-495™

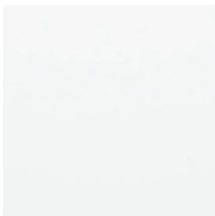
CARRIBEAN SURF



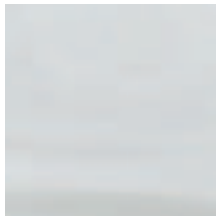
Except J-500™ collection and J-495™, J-485™, J-475™

Swim Spa Collection

PORCELAIN



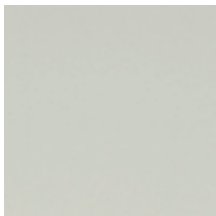
PLATINUM



SILVER PEARL



WHITE PEARLESCENT



PLATINUM

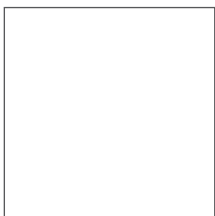


J-245™ and J-235™ only

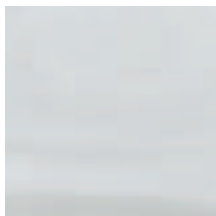
J-200™ Collection

Design, Professional and Lodge Collection

WHITE



PLATINUM



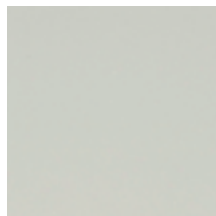
Except City™ Spa

COBALT



Except City™ Spa, Unique, Lodge (all)

WHITE PEARLESCENT



Lodge only



FINISHINGS

Curvalux™

SILVERWOOD



J-500™

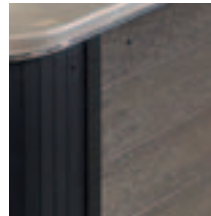
ROASTED CHESTNUT



J-500™

Swim Spa

SILVERWOOD/ BLACK



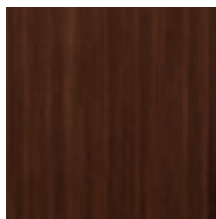
Pro-Finish™

BRUSHED GRAY



J-400™, J-300™ only

MODERN HARDWOOD



J-400™, J-300™ only

SMOKED EBONY



J-400™, J-300™ only

Customisable panels



DESIGN COLLECTION
Virtus™, Skylounge, City™
Spa and Unique only

Synthetic wood

SILVERWOOD



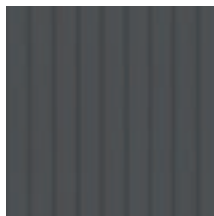
Lodge - J-200™

ROASTED CHESTNUT



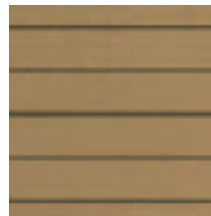
Lodge - J-200™

GRAPHITE



DESIGN COLLECTION
Virtus™, Virtus™ Pro,
Profile, City™ Spa, Delfi,
Delos and Santorini Pro
range only

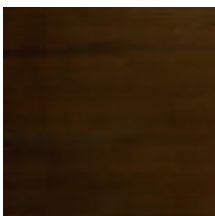
SAHARA



DESIGN COLLECTION
City™ Spa and Unique
only

Wood

WENGÉ



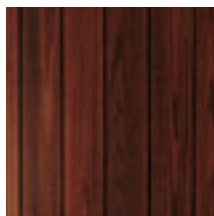
DESIGN COLLECTION
Unique only

TEAK



DESIGN COLLECTION
Unique only

TEAK



DESIGN COLLECTION
Profile only

TEAK



DESIGN COLLECTION
Virtus™, Virtus™ Pro,
Profile, City™ Spa, Delfi,
Delos and Santorini Pro
range only

VEINED OAK



DESIGN COLLECTION
City™ Spa, Delfi, Delos,
and Santorini Pro range
only


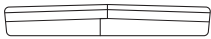





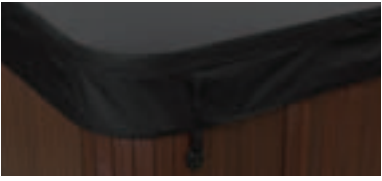

SASHA



DESIGN COLLECTION
City™ Spa only



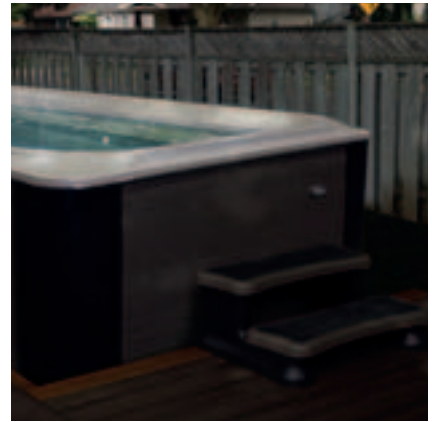
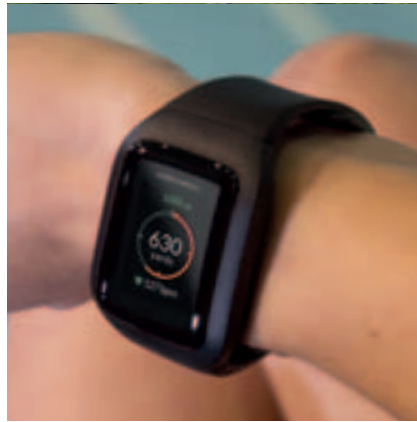
COVER FOR SPA

	STANDARD VINYL	PROLAST™ COVERS	PROLAST™ EXTREME COVERS
Feature	Easily wipes clean - Water resistant Standard covers offer basic protection, helping to maintain heat and keep debris out of your hot tub.	Premium outdoor cover - 25% lighter - Water resistant - Superior UV resistance properties. Engineered for durability from superior marine-grade material, Jacuzzi® PROLAST™ Covers are 25% lighter for easier handling and add a premium touch to your outdoor decor.	Premium outdoor covers for extreme climates - Water resistant - Superior UV resistance properties - Angled to promote run-off - Dense foam supports heavy snow loads. Jacuzzi® PROLAST™ EXTREME Covers are made from superior marine-grade material, offering the greatest weight-load bearing capacity, the highest density foam, and are pitched to encourage run-off rain and snow.
Foam density	~ 24 Kg/m ³	~ 24 Kg/m ³	~ 32 Kg/m ³
Material	Vinyl	All-weather PROLAST™ Marine-grade fabric	All-weather PROLAST™ EXTREME Marine-grade fabric
Taper	 ~ 100 - 65 mm	 ~ 100 - 65 mm	 ~ 125 - 75 mm
Cover handles	2 Exterior	6 Exterior + 2 Interior	6 Exterior + 2 Interior
Size	Custom ordered for any hot tub brand.	Custom ordered for any hot tub brand.	Custom ordered for any hot tub brand.
Colors	 Silverwood  Platin  Ice	 Grey  BLACK (optional)  SIENNA (optional)	



ACCESSORIES SPA AND SWIM SPA JACUZZI®

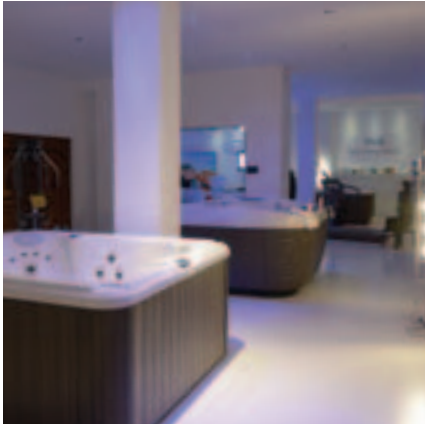
Your new Jacuzzi® hot tub and Swim spa is not complete without some essential accessories that help you adapt to your new hot tub lifestyle more easily. Customise your hot tub area and create an exclusive space that is practical but also exquisite in garden furniture design.





CUSTOMER SERVICE AND ON-GOING COMMITMENT

Showroom



When you have an idea of the hot tub model that will suit your needs, you can see the real thing at your nearest showroom. Our experienced sales force will then take you through the purchase process and in many instances give you're the opportunity to try out hot tubs in demonstration areas.

Delivery



Once you have selected the hot tub you can arrange for it to be delivered. This part of the process involves us scoping out the fitting area, the location of your home and the logistics of bringing the tub to you.

Fitting



After the electrical work & level base have been completed, Jacuzzi® will send their expert fitter to connect the hot tub to its designated power source. They will then fill the tub to the right level and then demonstrate the correct way to use it.



Aftercare



With the hot tub installed and being used at your leisure, it's good to know that Jacuzzi® is always on hand to deal with any questions, offer tips and recommend the best ways to keep your unit running smoothly.

Warranty



All our hot tubs carry a standard 2 year warranty to provide you with superb peace of mind. the 2 year warranty is for EU countries only. For other markets please check with local retailer.



JACUZZI® EUROPE S.p.A.

Direzione e Coordinamento
Jacuzzi Brands, LLC. (USA)
S.S. Pontebbana Km 97,200
33098 Valvasone Arzene (PN) Italia
Tel. +39-0434-859111
Fax +39-0434-85278

Via Copernico 38
20125 MILANO
Tel. +39-02-8725 9325
www.jacuzzi.it
www.jacuzzi.eu
info@jacuzzi.eu

HOT TUB-SWIM SPA CATALOGUE
EN - COD 220103932 - 03/2020